

## PROJEKT DYABOLA

# General User Manual for the DYA v5.5 Retrieval Programme

2nd Version

**PROJEKT DYABOLA**  
copyright 2001 by  
Verlag Biering & Brinkmann  
Postfach 45 01 44  
D-80901 München  
Fax +49-89-32 35 21 82  
E-Mail: [info@dyabola.de](mailto:info@dyabola.de)  
All rights reserved  
All forms of duplication are prohibited

**Licence agreement:**

The program and electronic databases are the property of Biering & Brinkmann GbR. The private licensee receives the right to the unrestricted use of the program and database on his or her own private computer. An institute receives the right to unrestricted use on its own computers. Passing on the program or database (even part of it) to third parties is strictly forbidden.

UP

USER MANUAL 

copyright 2001 by Verlag Biering & Brinkmann  
Postfach 45 01 44, D-80901 München  
Fax +49-89-32 35 21 82, E-Mail: [info@dyabola.de](mailto:info@dyabola.de)  
about



# Table of Contents

## **1. Introduction**

- 1.1 What is DYABOLA
- 1.2 Basic Components of a DYABOLA Database
- 1.3 Appearance of a DYABOLA Database
- 1.4 Structure of the Inquiry Program

## **2. Installation**

- 2.1 Technical Requirements
- 2.2 Installation (CD-ROM)
- 2.3 Optimising installation
- 2.4 Starting the Program

## **3. Functions (CD-ROM)**

- 3.1 The Main Menu
- 3.2 The Quick Search Menu
- 3.3 The "Tools" Menu
- 3.4 The Special Functions Menu
- 3.5 The Functions in the Title Card
- 3.6 The Functions in the Data Sheet
- 3.7 The Functions of the Picture Viewer

## **4. Functions (WEB)**

- 4.1 The DYABOLA Internet Interface

## **5. Search and Navigation**

- 5.1 The DYABOLA Navigation Diagram

## **Appendix**

- App.1 Keys
- App.2 Special characters
- App.3 Projects

UP

USER MANUAL



copyright 2001 by Verlag Biering & Brinkmann  
Postfach 45 01 44, D-80901 München  
Fax +49-89-32 35 21 82, E-Mail: info@dyabola.de  
about



## 1.1 What is DYABOLA?

The DYA program controls access to all **DYABOLA databases**. It is neither a database engine, nor the actual database. Rather, it is a control program with which the data in a database can be structured, administered, searched and browsed through. By combining relational and hierarchic elements, the program meets the demands of the sciences of art and culture. In contrast to other programs, the most complex of data systems can be created, but they remain easily and quickly accessible and allow all imaginable questions, due to the simplicity of the program. The aim of this manual is to fully explain the program's search and navigation functions. In addition, it should show the possibilities offered by the program's open structure. These possibilities have been exploited differently in the various DYABOLA database projects. In some cases, there are even contradictory data structures, in order to meet the respective requirements of the database. The open structure of DYABOLA makes it possible to adapt a database project to the method of working of the operators (librarians, archivists...) or to the material conditions (e.g. overlapping, incompatible inventories). It is of course possible to take up standard data or specified partial structures such as official thesauri into DYABOLA databases. However, the real strength of the program is the lack of a need to force a predefined amount of data into the system of standard data, which would inevitably lead to a loss of valuable data. This manual deals with the basic components of a DYABOLA database and the installation and functions of the search program. Please refer to the introductory manuals on the individual database projects for the various different types of search and navigation. In contrast to the introductory manuals, this manual is intended to serve as a reference work for the user of a DYABOLA database who has already gained an insight into the functioning of a program. It should give the user the chance to grasp the structure of a DYABOLA database in order to gain the greatest possible benefit from it.





## 1.2 Basic Components of a DYABOLA Database

### **Titles**

Title text

Record number

Descriptors

### **Relations**

Database tree (father-child)

References (general)

Forward reference (link)

Reference back (aquired-Link)

### **Dependent descriptors**

Classifier tree (subject)

Headings

Key-words

### **Comments**

## Titles

**The titles** are the most important components of a DYABOLA database. They are the smallest possible independent units of information. All other components are made up of several titles, describe relationships between such titles, or depend on a title. The title itself consists of three elements: a title text, a record number and the descriptors.

**The title text** functions as a designation. It can just as easily be the name of a person, a date, or a longer grave inscription. It is possible to prepare different "types of title text", in order to distinguish between different axiomatically separate natural phenomena. As a general rule these are, for example, objects, persons, places, time concepts, events, sources, pictures and literature.

**The record number** is necessary as a clear identification number, since different titles can of course have the same title text. Just think of common names like "Smith, J." or the paratactic "columns" of an early Christian basilica (whose position in the nave is a descriptor and does not belong in the title text). The record number does not necessarily appear for the user; however, if, for example, he or she noted down the record number after an earlier search, it can be used to get directly to an ambiguous title.

**The descriptors** fill a title with meaning. There are two main types of descriptor: the reference and the dependent descriptor. Both have the function of specifying the title. The following example will show the purpose of the descriptors: In his memory, man distinguishes between two objects with the same name not according to a classification or record number, but according to accompanying information or circumstances. One thus identifies two anonymous column capitals in the pantheon (both have the title text "capital" in the CENSUS) according to their position in the portico; two churches with the name "San Marco" conjure up an image in our minds in relation to their location, such as Venice or Rome. In the first case, the descriptor is designed to be a dependent descriptor, as there is nothing more to say about the position "front left". However, "Rome" and "Venice" are linked to "San Marco" by means of a reference, as they are themselves titles to which more information is attached that has nothing to do with "San Marco". For example, Rome can be the location of other churches.

UP

## Relations between titles

A single title does not constitute a database. The dataset of a DYABOLA database consists of numerous titles that are related to each other in different ways. Two main types are to be distinguished: sequential-hierarchic and hypotactic. The sequential-hierarchic relations hold the whole database together, and make it into a conceivable set of data, the "database tree". By means of the hypotactic "references", one title can be connected to any other title, similar to the way it is done in the Internet.

**The database tree** arises from the fact that each title can have a "father" and many "children". In the ideal case, this leads to a single tree which has the name of the database as its uppermost title (e.g. Census of Antique ...) and branches off downwards via various different subdirectories (such as monuments, documents...), if necessary down to the capitals of a large spa or the quadrants on a codex page. The database tree can be used to present all conceivable hierarchic structures.

**The references** make it possible, to link any particular title with any other particular title, as already mentioned. However, the DYABOLA cross-reference has two decisive advantages over the hyperlink in the Internet, namely it has a clear condition and, if desired, an automatic reference back.

**A link** is inserted by the operator, for example by filling in the "Artist" field under "Object". The operator then looks for the "Person" concerned and makes this selection. The link "Person to Object" under the condition "Artist" has thus already been defined by the database administrator beforehand. This kind of cross-reference always relates to two types of title text (see title text), such as object and person in our example. Of course, two titles with the same type of title text can also relate to each other (for example "Person to Person" under the condition "Father/Mother").

**An aquired link** is automatically assigned after a link has been inserted. It must be defined once, but separately by the database administrator, because, in contrast to the link, it can have a different name and is not necessarily desirable in all cases. For example, in the aquired link "Person to Object", the different name would be "Works" instead of "Artist". A case in which the reference back is not desirable would, for example, be details of the author in the object dataset. It is good to be able to cite the person entering an object, but it generally makes no sense to fill the details of a person who can also appear as an author of a few interesting monographs with tens of thousands of object datasets.

UP

## Dependent descriptors

**The dependent descriptors** designate the amount of all non-independent descriptors, i.e. all those that are not themselves a title and relate to a reference to the first title. There are two types of dependent descriptor: the "heading" and the "key-word". The latter depend on the former and, whereas the headings must be defined by the administrator, new key-words can be assigned to a heading by the operator.

**The classifier tree** (subject) is a compilation of all conditions. In principle, it is a tree of headings which branch out downwards. The headings and key-words of a database are visible to the researcher, but the tree also contains the entire control of the program invisibly. At the same time, headings of the visible part can also refer to headings in the invisible part (e.g. types of title text).

**The headings** are specified dependent descriptors predefined by the administrator. Like a title, headings can have a "father" and several "children". For purposes of differentiation, one speaks here of levels of the classifier tree, since it functions as the foremost father. Depending on the type of dependent descriptor, it must be decided whether the entry to be made is entered as a heading or as a key-word. Typical headings are specified, particularly hierarchic concept systems, such as the categories of a library system, a classified thesaurus such as Icon-Class, or a clearly limited number of object locations in a museum. In addition, headings can refer to other headings, in order to open up areas of a database which are actually not accessible to the researcher.

**The key-words** are appended to headings of the classifier tree in the form of lists. The name of the respective key-word list is that of the respective heading. The key-words of a list can relate to each other. This makes it possible, for example, to make reference to a synonymous term.

## Comments

**Comments** are independent text fields that can be inserted at different points in the program. They can be used, for example, to more precisely explain a heading in the classifier tree or further specify a descriptor in the title. The comments behave like the title text in relation to the title. They are freely composed texts that can consequently be searched through with the free-text search.

UP



UP

USER MANUAL

copyright 2001 by Verlag Biering & Brinkmann  
Postfach 45 01 44, D-80901 München  
Fax +49-89-32 35 21 82, E-Mail: info@dyabola.de  
about



## 1.3 Appearance of the Basic Components

Title card

Data sheets

Title line

Link- or aquired link line

Printout formatting

This section describes the various different ways in which a title and its components appear. After the brief theoretical introduction, the following sections will explain the executable program steps. It is important to note that the ways in which the program appears here are not to be equated with the user interface. The graphic DOS interface and the mouse-controlled internet interface in principle contain the same elements. Although the two interfaces are clearly different in appearance, the elements explained here are present in both.

### Title card

The title card is initially the most important way in which a title appears; in principle it is equivalent to the file card in a filing box. In addition to the title text, different dependent descriptors and references to the title and inherited information from the superior father title can be formatted on the title card. Apart from specific information concerning the title, the title card also provides certain technical information: In the top line, you can see the type of title text and, as required, the number of the title within the current result. In the bottom line, a star shows you that the title has further branches, in other words it has children. An arrow shows whether references to the title are available; a screen symbol indicates that pictures are available. Finally, the number of dependent descriptors and data sheets is stated. The latter is necessary, because the data sheets can be assigned individually by the operator. Thus, for example, not every person must have an address data sheet. In addition, the title card provides the operator with the record number, which does not appear for the normal user.

UP

### Data sheets

The data sheets are appended individually to a title and serve to present all dependent descriptors and references for which there is no space on the title card.

The various different items of information can be distributed freely over the designated data sheets. Each title initially receives one data sheet entitled "Dependent descriptors", which also contains all internal information that is not contained in the data sheets defined by the database administrator.

UP

### Title line

The title line is a short form of the title card. It always appears when several titles are listed, in other words one line is available for each title. Like the title card, it initially contains the title text and selected dependent descriptors, references and inherited information from the superior father title.

The user will mainly come across the title line in the so-called contents list. This is the list of all titles that are dependent on the initial title. In addition, it appears in the list of a result sorted according to title text. In both cases, the list is sorted according to title text, even if the title text is not at the beginning of the title line (this kind of title line is, for example, typical for a list of references, where the author comes before the title text of the book). (see [Sorting](#))

UP

## Link or acquired link line

The link or acquired link line always appears when a title is to be displayed with another title. As in the title line, it is a matter of presenting a title as part of a line.

However, in contrast to the title line, the link or acquired link lines are not dependent on the title, but on the condition of the respective reference. In the example reference already mentioned of Object-Person under the condition Artist, the "Link line Person under Object (Artist-Work)" would show the name of the artist and, for example, the dates of his life. The "Acquired link line Object under Person (Artist-Work)" shows under Person, for example, the name, dating and location of an object.

UP

### Printout formatting

This format is a third form of presentation of a title. It is used to export results to an external file or to a printer. In the latter case, it is also possible to select another format (title card with data sheets) which is not dependent on the printout formatting ([see Export](#)).

As in the case of the title and link lines, one line is taken up per title in the printout formatting, the only difference being that its length is unlimited in the printout formatting. The individual titles are separated from each other by the line break. The lines can, for example, be formatted with hyphens. This provides an ideal basis for importation into a spreadsheet. The pre-formatting of HTML pages is also conceivable, for example, in order to show the result produced in a browser. The export format is initially ASCII text. The presence of sensible printout formatting is the responsibility of the various projects. The formatting is often arranged in such a way that exportation to a spreadsheet is made more difficult, since such formatting would facilitate prohibited reproduction.

UP



UP

USER MANUAL

copyright 2001 by Verlag Biering & Brinkmann  
Postfach 45 01 44, D-80901 München  
Fax +49-89-32 35 21 82, E-Mail: [info@dyabola.de](mailto:info@dyabola.de)  
about





## 1.4 Structure of the Inquiry Program

Main menu

Quick search menu

Tools menu

Special functions menu

Navigation functions

Online help

The DYA inquiry program uses a few menus to control complete access to any DYABOLA database, however complex it might be. Apart from the functions of the four control menus, it is possible to navigate through the data. From any chosen point in the data, for example, a result can be produced or changed with the aid of context menus. To begin with, only the important control menus, the result window and the remaining visual appearance of the program are to be presented. In the third section of this manual, you will find a detailed overview of the functions, arranged according to the elements presented here.

### Main menu

The Main menu contains all inquiry and result functions that are possible in each DYABOLA database and bears the name of the currently active DYABOLA database as a header.

From here, you get to the database-specific **Quick search menu** (see below). You receive hierarchic access to the **Classifier tree** (subject). **Key-word** enables you to make a general search in all key-word lists contained in the headings tree.

**Title** enables you to make a direct jump to all titles with the standard type of title text (generally only the sections of the database).

The **free text search** in any part of title/comment enables you to search in all title texts and comments.

The **display result** function allows you to see a result which you can select from the results list (see below).

**Tools** leads to another menu of the same name (see below).

By selecting **Quit**, you exit the current database. This takes you to the database selection from which you can select one of the installed DYABOLA databases or leave the program completely.

UP

### Quick search menu

In contrast to the Main menu, the quick search menu is database-specific. It thus contains special search functions concerning a particular database.

In a literature database, this can be the authors or the monograph list, for example. Two main types of search function must be distinguished: on the one hand, the direct **jump into the database tree** (monograph list) and, on the other, a **search via a key-word list** (authors' names) which in this case can also comprise title texts or be composed of various different key-word lists. In addition to the two search functions mentioned, a **pre-linked search** is also possible in the quick search menu. For example, in the search for a book according to author, in which one selects the name of the author from a key-word list and as a result receives all books by the author or authors.

UP

## Tools menu

The edit result menu contains all functions necessary to change and adapt a result

**Combine** makes it possible to combine two results with the logical operators AND, OR, XOR and DIFF. **Date range of publication** makes it possible to restrict a time-specific result in time, such as literature on a particular topic. (only in literature databases - more complex databases as for e.g. the CENSUS have a more complex concept of time: see [CENSUS MANUAL](#) s.v. date range)

**Sort** orders the titles of a result according to title text or according to any particular relevant key-word list, for example books according to authors' names.

**Delete, copy, rename, save** and **load** relate to the results of the results window within the DYA program. The results are saved in the subdirectory dya\dyaerg\dya\_???\ alongside the DYABOLA master index. They can only be opened again within DYA.

**Export**, in contrast, is used to export a result in a specified form to a printer or hard disk. For copyright reasons, the result is limited to 300 titles. It is always saved under the name dyabola.txt in the subdirectory dya\dyaerg\dya\_???\ alongside the DYABOLA master index.

UP

## Special functions menu

The special functions menu (Shift-F10) offers various different program settings. **Select language** allows you to select between up to four languages (generally German, English, French and Italian or Spanish).

It is also possible to **initialise the printer**.

The **polyhierarchic search** is used to find a key-word in different key-word lists.

The **general key-word index** links all r????

**Search all superior entries in the hierarchy** is used to ????

The function **Show data sheets/dependent descriptors immediately** ensures that when a title card is opened its first data sheet is also opened.

UP

## Navigation functions

The two elements title card and data sheet have already been explained in the previous section, but they are mentioned here again, because it is not only possible to navigate through the data from them. It is also possible to form different dependent results from all points using menus. The precise function is explained in the third section of this manual.

(Section [3.5 Title card](#); [3.6 Data sheet](#))

UP

## Online help

The blue status bar at the bottom of the screen always shows the commands available. In addition, a help window can be opened at any point in the program by pressing "F1". The Online help of the web version is still in the development phase.

UP



UP

USER MANUAL

copyright 2001 by Verlag Biering & Brinkmann  
Postfach 45 01 44, D-80901 München  
Fax +49-89-32 35 21 82, E-Mail: [info@dyabola.de](mailto:info@dyabola.de)  
about



## 2.1 Technical Requirements

[WEB: Recommended system configuration](#)

[CD-ROM: Recommended system configuration](#)

[CD-ROM: Minimum requirements](#)

[CD-ROM: Advantages of installation under Windows NT/2000](#)

### Recommended system configuration for the web version

1. Operating system: any
2. Fast internet connection: Dyabola has a 45 mbit connection to the backbone. Therefore the retrieval speed depends primarily on your internet connection and the overall performance of the internet as a whole.
3. Browser: Internet Explorer or Netscape 4.0 or higher with Javascript. When using password access we recommend accepting the cookie which you will get from the Dyabola server. Cookies are not needed using IP access.
4. Display resolution: SVGA (XGA recommended) and 65'000 colors or more.
5. For viewing and printing the manuals we recommend Adobe Acrobat-Reader 5.0.

UP

### Recommended system configuration CD-ROM

All DYABOLA databases can be searched if the minimum requirements are met, although at reduced speed. However, the recommended system configuration must be met for pictures to be shown. The search speed does not depend on the software, but on the hardware used. Slow CD-ROM servers, networks and processors constantly lead to complaints about the slowness of the inquiry program.

1. Operating system: Windows NT 4.0 or 2000 Prof.
2. Pentium processor with 1000 MHz = 1 GHz or more
3. 128 MB RAM
4. 300 to 900 MB free space on hard disk for the text part of the database. In addition, e.g. approx. 4,5 GB for the pictures of the Census. (Please refer to the [product information](#) relating to the respective database for more precise details.)
5. Graphics card with a resolution of 1024x768 pixels (XGA) and at least 65,000 colours
6. For full performance of the DYABOLA character set, use a printer which emulates the EPSON LQ-mode (we recommend Epson Stylus Photo 890 or 1290)
7. Approx. 50-fold CD-ROM drive

UP

### Minimum requirements CD-ROM

1. Operating system: MS-DOS 4.0 (without images)/ Windows NT (with images)
2. 80486 processor or higher
3. 640 KB RAM (memory), of which at least 540-620 KB must be available for DYABOLA (depending on the database)
4. 300 to 900 MB free space on the hard disk for the text part of the database. In addition, e.g. approx. 4,5 GB for the pictures of the Census. (Please refer to the [product information](#) relating to the respective database for more precise details.)
5. VGA graphics adapter
6. For full performance of the DYABOLA character set, use a printer which emulates the EPSON LQ-mode.
7. CD-ROM drive

UP

## Advantages of installation under Windows NT/2000 prof.

- 1.** The DOS box is freely configurable under Windows NT/2000. This means that you always have the optimum amount of memory available for Dyabola, for example.
- 2.** Picture display is not supported by Windows 95/98/Me because these operating systems cannot control properly two tasks at the same time

UP



UP

USER MANUAL

copyright 2001 by Verlag Biering & Brinkmann  
Postfach 45 01 44, D-80901 München  
Fax +49-89-32 35 21 82, E-Mail: info@dyabola.de  
about

## 2.2 Installation of the Inquiry Program

Web Version

CD-ROM 2001

CD-ROM until 2000

### Installation: Web Version

Since April 2001 there are two ways for accessing the DYABOLA Web Version. Single Customers and smaller institutions are able to access the content via the key password. Big institutions can use the databases via IP access. Here every computer of the institute has access to DYABOLA as long as it uses the registered gateway server of the institute.

1. Start your web browser and surf to [www.db.dyabola.de](http://www.db.dyabola.de).



2. When accessing the first time with your official key-password you should execute the function "delete Your current key" to make sure, that there is no demo key on your computer with which you cannot access all databases you have paid for. After clicking on "delete Your current key" some browsers show the following dialogue. Confirm by clicking "OK" (when needed two times).

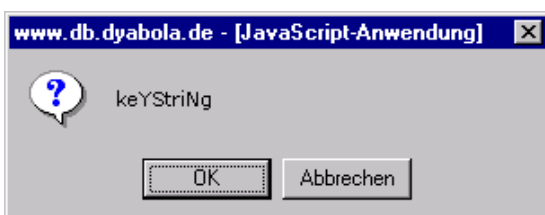


3. If you want to access via key password, continue with article 4. If you want to access via IP adress, continue with article 5.

4. Key Password Access: Click "Start". A window appears where you enter your key and afterwards press OK.



After pressing OK some browsers like to have another confirmation. Press OK again.



Now you can choose the database you like to access (continue with article 6) Once you've entered the key-password, it can be saved in a cookie depending

on the settings of your browser. You do not have to enter the password each time. If you have to enter the key each time you log in, the cookie-settings of your browser aren't correct or somebody has executed the function "delete Your current key". Advice for Administrators: We recommend using Netscape 6.1. This browser can remember passwords in combination with the url.

**5.** Before accessing DYABOLA via IP adress Biering & Brinkmann has to register the IP address (single or range) of the institutes own gateway server(s). The Institute has to guarantee, that only memers of the institute can access the internet with this gateway. If for example all Institutes of a University are able to access the internet via this gateway, the institute has to buy a campus licence.

Members of the institute, who cannot access the internet via the gateway, because they are for example on exvacation and therefore use a local dial-in connection, cannot access DYABOLA via IP adress. They can access DYABOLA via key-password, which they get from the institutes system administrator. It is strictly forbidden to use the key-password on a computer which is not property of the institution. Violation will be prosecuted.

After registering of the gateays IP adress at Biering & Brinkmann you just have to activate the checkbox "IP-Validation" on the entry screen.



**6.** After pressing "Start", you can choose one of your databases and your preferred language. After pressing "Start" again, you can start your retrieval immediatly.



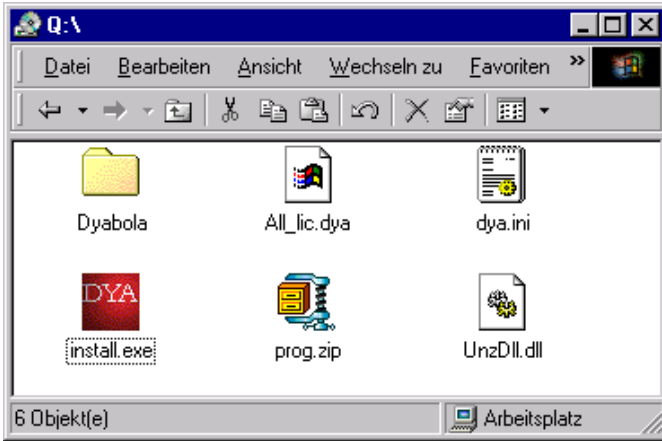
## Installation: CD-ROM 2001

An all new developed installation program is included in delivery since the august 2001 release of the Subject Catalogues. The main change is, that the program dya.exe has not to be personalized to each customer. Therefore a license file named "license.dya" is included in the installation process. If you are already a DYABOLA customer the license file is created from coded information on the CD after entering your personal key password. If you are a new customer to one or more databases the license file will be separately delivered.

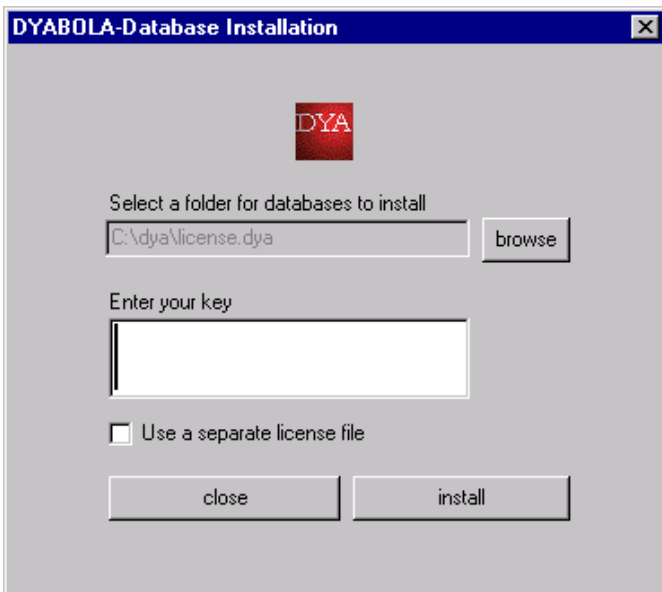
**IMPORTANT:** If you are customer of more than one database CD-ROMs (e.g. Subject Catalogues and CENSUS), we strong recommend installing the databases in order of publishing date. So you can be sure of always using the newest software version.

Please perform the following steps in the new installation program (Subject Catalogues August 2001):

1. At first open the delivered data CD for e.g. with the windows explorer and start the program install(.exe) by double-click

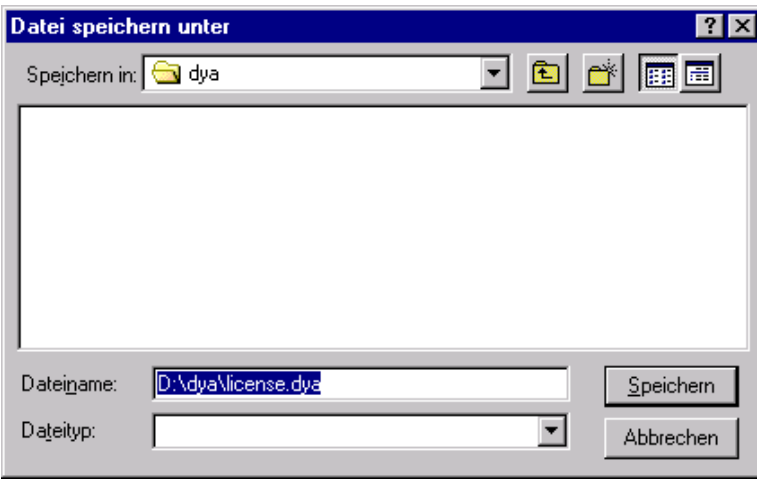


2. An installation dialogue opens, in which you can change some settings.

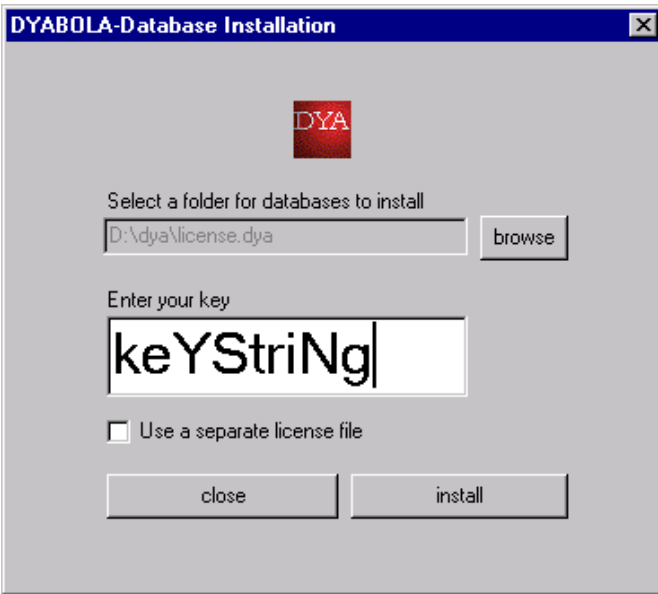


3. The first Option "Select a folder for database to install" lets you choose the preferred hard disk for installing DYABOLA. The default disk is C:. If you are content with this, you may continue with article 4.

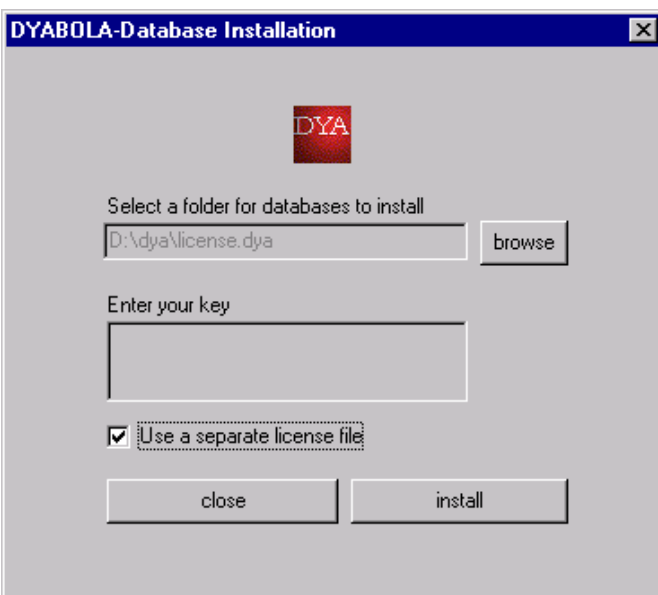
If you like to install DYABOLA on another hard disk, for e.g. because of missing hard disk space on C:, click "browse". Another dialogue opens, which lets you navigate to the preferred location on your computer. On the one hand you may choose an existing Folder "dya" on another hard disk, on the other hand you may also create a new one. In the latter case please do not forget to open the new folder. If the dialogue is equivalent to the picture below, press "Speichern" or "Save" and continue with article 4.



4. If you are not a new customer to one of our databases you can enter your key-password, included in delivery, in the field "Enter your key". The key is very case sensitive. You may press install now and continue with article 7. The license file will be created from coded information on the CD now.



5. If you have bought your first or an additional database check the box "Use separate license file" and press "install".

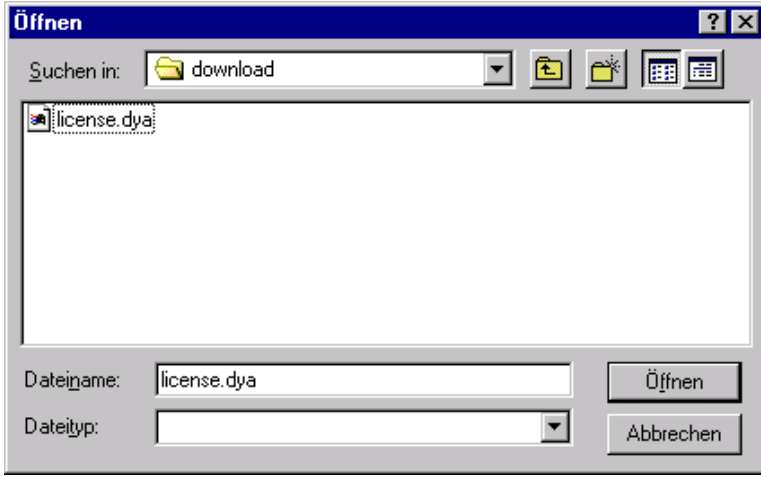


6. A dialogue is opening, where you can choose the location of the license file "license.dya" which was separately delivered via e-mail or disk. Navigate to the delivered file and press "Öffnen" or "Open"

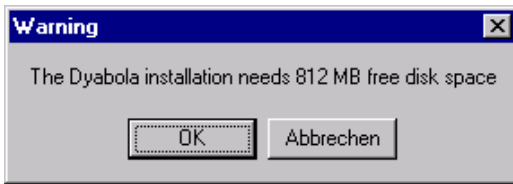
Es öffnet sich ein Dialog, in dem Sie eine separat gelieferte Lizenz-Datei auswählen können, die sie entweder per E-Mail oder auf einer Diskette erhalten



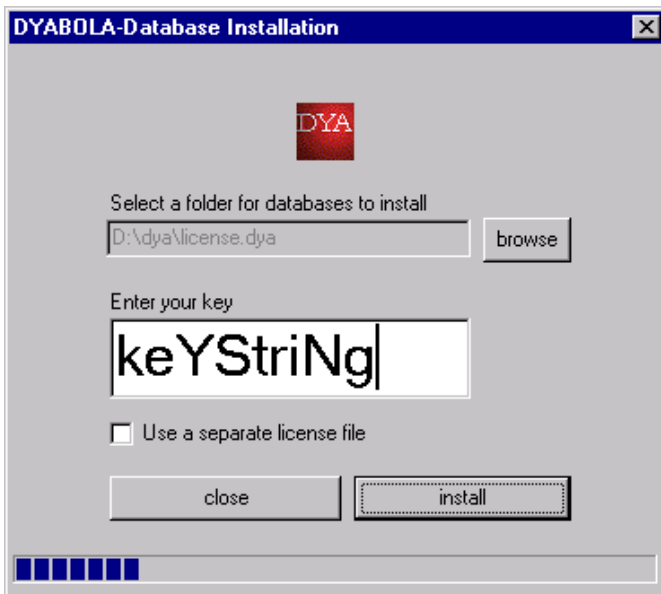
haben. Navigieren Sie zu der gelieferten Datei und drücken Sie "Öffnen".



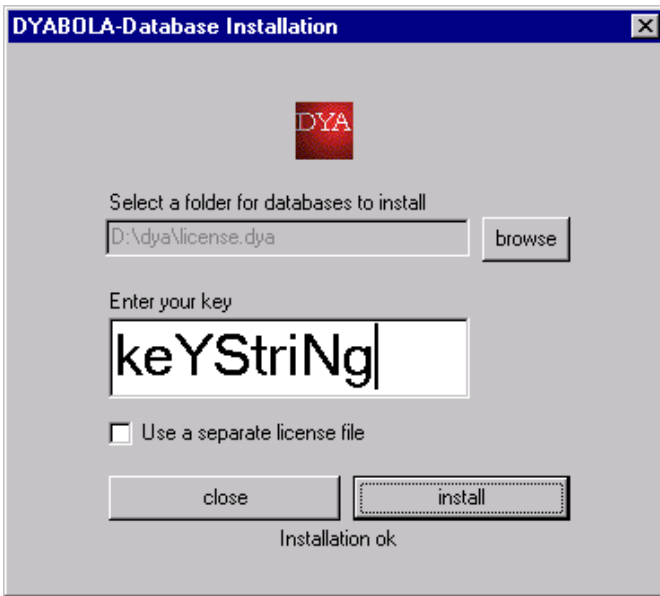
7. A message appears, which tells you how much space on your hard disk the databases will consume on your hard disk when installed. If you are content with the message press OK.



8. On the bottom of the installation dialogue you can see the progress of installation for each database.



9. After completion the message "Installation ok" appears and you may press "close".



The main part of the installation has finished now and you may start the program in the folder you have chosen at the beginning (e.g. c:\dya). If you are customer of image databases program starts with "Dyastart(.exe)" if you only have non-image databases it starts with the batch "D(.bat)". If you have further questions, please have a look into the next chapter "[Optimizing Installation](#)". Here you find solutions for the following issues: strange characters; display settings in Windows 2000; startup language; message "startpif not correct". If the program starts without problems, continue with the chapter "[Starting the Program](#)".

UP

## Installation CD-ROM until 2000

### Installation under Windows NT 4.0

Automatic installation is not planned at present, as you only have to copy the files contained on the installation diskette onto your hard disk. The Install.bat on the installation diskette is only for the DOS installation and does not support picture display. Free configuration of the DOS box is not possible under Windows 95/98. Since this constantly leads to problems which can only be solved by the system manufacturer (Microsoft), we are unfortunately unable to provide support here.

**1.** Copy the complete subdirectory "dya" from your installation diskette to the desired hard disk (e.g. D:). The subdirectory on your hard disk should now contain the following files:

```
D:\dya\dyabola\
D:\dya\dyazchn\allezchn.txt
D:\dya\dyazchn\dya16
D:\dya\dyazchn\dya16.f16
D:\dya\autoexmy.nt
D:\dya\brequest.exe
D:\dya\btrieve.exe
D:\dya\butil.exe
D:\dya\d.bat
D:\dya\dya.exe
D:\dya\dyastart
D:\dya\dya.txt
D:\dya\dya_2.txt
D:\dya\dya_3.txt
D:\dya\dya_4.txt
D:\dya\help.txt
D:\dya\help_e.txt
D:\dya\help_f.txt
D:\dya\help_i.txt
D:\dya\startdya
```

**2.** Please copy the files from the program CDs to your hard disk. It is important that the text files of the database are located in the same subdirectory as the program files already copied. The picture files can be located on any other hard

disk, but must have the same directory tree here too. After copying, the subdirectory "D:\dya\dyabola" looks like this:

```
...\dya_????\id.btr
...\dya_????\id.txt
...\dya_????\ex\best.btr
...\dya_????\ex\best.ext
...\dya_????\ex\dya.btr
...\dya_????\ex\dya.ext
...\dya_????\ex\key.btr
...\dya_????\ex\Stichw.btr
...\dya_????\tiff768\00\00\*\*\.*
```

As already stated, the subdirectories under \dya\dyabola\dya\_????\tiff768\00\00\... can be located on any other hard disk, but must always have the same directory tree. (The question marks in "dya\_???" stand for the respective database, e.g. "dya\_grab" for the "Attic Grave Reliefs" or "dya\_cen" for the "Census")  
Once you have copied the files to the right place, you can try starting the program. Please refer to the section "**Starting the Program**". If this attempt should fail, please continue with the section "**Optimizing Installation**".

### **Automatic installation of the CD-ROM (DOS)**

Start MS-DOS on your computer. Insert the program diskette into the floppy drive of your computer. Then change to the floppy drive:

A: <Return>

and start the installation

install <Return>

The following window appears:

```
      Welcome to the installation of Dyabola x.x!
      This program will install Dyabola x.x on your hard-
      disk. The installation may last up to 60 min.
      «Return» = Ok      «ESC» = Cancel
```

Now press the return key. The first selection menu appears:

There are two possibilities to use the database(s).  
Please enter your choice and press «Return».

- 1 Copying the database(s) on your hard-disk
- 2 Direct use of the database(s) from CD-ROM

«Return» = Ok «ESC» = Cancel

Answer the question whether you wish to copy the database onto your hard disk (1) or whether you want to research directly on the CD-ROM (2). Type in the appropriate number and then press the return key. (Please note that searches of the DYABOLA databases run more quickly from the hard disk than from the CD-ROM). If you have selected number 1 (copy to hard disk), the following selection menu appears:

Please select the database(s) you want to install  
on hard disk.  
Enter the number(s) and press «Return».

- 1 Census of Antique Art and Architecture known...
  - 2 Römisch-Germanische Kommission Frankfurt
  - 3 Realkatalog des DAI Rom
  - 4 Zugangsverzeichnis DAI Madrid
  - 5 Archäologische Jahresbibliographie 199..
- .....

«Return» = Ok «ESC» = Cancel

Again enter the appropriate numbers in order to select the desired databases. You can now press several numbers consecutively. (But please note that you will

later only be able to call up those databases to which you have actually subscribed). In the next window, you will be asked for the letter of the floppy drive containing the program diskette:

Please enter the source-drive of the program-disk and press «Return».

Source-drive of the program-disk A:

«Return» = Ok    «ESC» = Cancel

Enter "a" or "b" and press the return key to continue. If you have selected to copy data onto your hard disk, you will be asked in the next window for the drive letter of the source drive, i.e. the drive containing the CD-ROM with the data:

Please enter the source-drive of the databases (on CD) and press «Return».

Source-drive of the databases (CD-ROM) D:

«Return» = Ok    «ESC» = Cancel

Enter the appropriate letter ("d", "e" etc.) and continue by pressing the return key. In the next window, you will finally be asked for the target drive, in other words the hard disk to which you wish to copy the data:

Please enter the target-drive and press «Return».

Install on (target-drive) C:

«Return» = Ok    «ESC» = Cancel

Enter the appropriate letter ("c", "d" etc.) and continue by pressing the return key. As a very last step, you have the opportunity to select your printer port:

Please select your printer-port:

- 1 Printer is connected to LPT1
- 2 Printer is connected to LPT2

Please enter your choice and press «Return».

«Return» = Ok    «ESC» = Cancel

In most cases, you will select the computer's default port LPT1 (1) and press the return key. If everything is correct, the following message will appear:

Installing database, please wait...  
(don't panic – installation may last up to 60 min.)

When you run the automatic installation, a log file (inst.log) is written. If the program doesn't run when you call it up, please send us a printout of this log file, which you will find in the C:\ directory as well as in the subdirectory C:\dya\dyabola\dya\_...\, along with printouts of your computer's autoexec.bat and config.sys.

Please refer to the section "[Starting the Program](#)". If your attempt to start the program should fail, please continue with the section "[Problems and Tips](#)".

### Manual installation (DOS)

**1.** Create the following structure of subdirectories on the disk drive on which you wish to install DYABOLA:

```
: \dya
: \dya\dyabola
: \dya\dyazchn
: \dya\dyabola\dya_????
: \dya\dyabola\dya_????\ex
```

**2.** Copy from the program diskette:

```
A:\dya\*. *  
nach : \dya\
```

**3. Copy from the program diskette:**

```
A:\dya\dyazchn\*. *  
nach : \dya\dyazchn
```

**4. Copy from the CD-ROM:**

```
A:\dya\dyabola\dya_cen\*. *  
nach : \dya\dyabola\dya_cen\
```

**5. Copy from the CD-ROM:**

```
A:\dya\dyabola\dya_cen\ex\*. *  
nach : \dya\dyabola\dya_cen\ex\
```

**6. Create the following batch file in the root of your hard disk:**

```
echo off  
lh smartdrv.exe  
cd \dya  
btrieve /P:2048  
dya /L1 /P3=1 /A /DC:\dya /ICDE  
butil -stop
```

(If you are installing DYABOLA on a Novell network, replace "btrieve /P:2048" with "brequest"). /ICDE means that the pictures are distributed over drives C:, D: and E: (adapt to your configuration as required). Please refer to the section "[Starting the Program](#)". If your attempt to start the program should fail, please continue with the section "[Problems and Tips](#)".

**IMPORTANT for clients of subject catalogue AND picture database!**

Clients who have installed both a DYABOLA literature database (e.g. subject catalogues) and a picture database (e.g. Grave Reliefs, Census) should under no circumstances use the INSTALL.EXE supplied with the update. This file changes the patch D.BAT generated for your computer. This will result in the picture databases no longer functioning correctly. The installed picture databases require the d.bat that is already present.

You have the following two options for installing the databases together:

First option (simple):

1. Rename the "d.bat" file in your subdirectory "dya\" and call it, for example, "d\_old.bat".
2. Insert the installation diskette of the update and execute the file "install.exe" as normal. Follow the instructions on the screen (you will find instructions on this under [Installation \(automatic\) \(DOS\)](#)). Please do not start the database after completing installation, but continue with the third step.
3. Delete the file "d.bat" newly created by the automatic installation in the subdirectory "dya\" and return the name of the file you previously called "d\_old.bat" to "d.bat". The program should now start as intended. All databases are now available in the database selection and the picture display functions properly. If you should have further problems, please contact [us](#).

Second option (manual):

1. From your update, you require the program file "dya\dya.exe" and the subdirectory "dya\dyazchn\". You will find both on the diskette supplied. Copy these files, for example with Windows Explorer, to the appropriate subdirectory on your hard disk.
2. Copy the databases to which you have subscribed from the subdirectory "dya\dyabola" on the CD to the appropriate subdirectory on your hard disk. The subdirectories have the following meanings:

dya_rom	Subject Catalogue DAI-Rome
dya_r98	Arch. Bibliography 98

dya_rgk	Subject Catalogue RGK
dya_mad	Aquisitions DAI Madrid

There is no point in copying databases onto your hard disk if you don't have a licence for them, as the program file dya.exe is personalised for you. They would only take up unnecessary space on your hard disk. The program should now start as intended. All databases are now available in the database selection and the picture display functions properly. If you should have further problems, please contact [us](#).

UP



UP

USER MANUAL

copyright 2001 by Verlag Biering & Brinkmann  
Postfach 45 01 44, D-80901 München  
Fax +49-89-32 35 21 82, E-Mail: [info@dyabola.de](mailto:info@dyabola.de)  
about



## 2.3 Optimising Installation

### CD-ROM Installation

Strange Characters *new*

Startup language *new*

Parameters of "dya.exe"

Startpif not correct

NO pictures: (I/O Error 103)

No pictures: wrong path in d.bat

Printer configuration

### Windows 2000 Prof. *new*

Window settings incorrect

Image Viewer doesn't work properly

Folder C:\Temp does not exist

### Windows 95/98/Me

No image databases

### MS-DOS/Windows 3.11

Dyabola on MS-DOS computers

### Network

Dyabola and Citrix Metaframe *new*

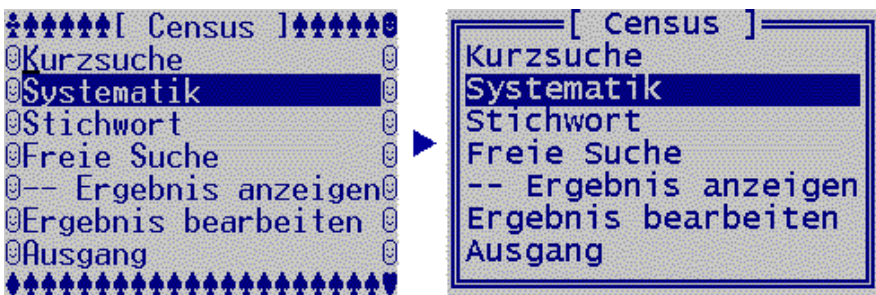
Dyabola on Novell servers

Dyabola on NT servers

Dyabola on CD-Rom servers

## Strange Characters

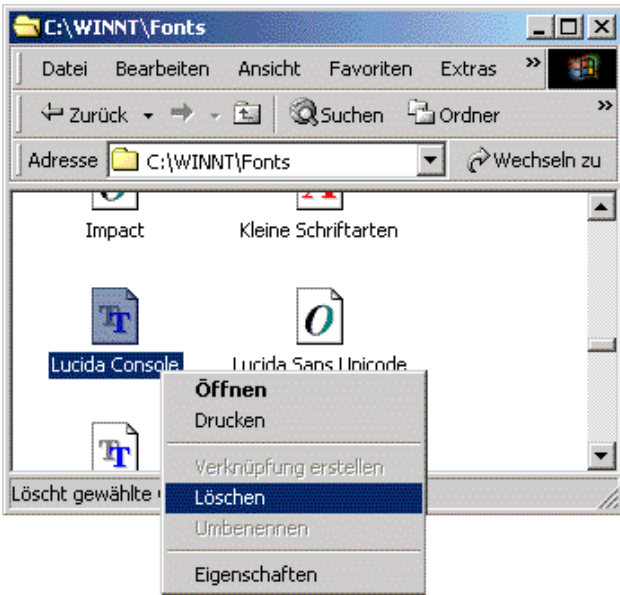
The Windows character set does not support all DYABOLA characters. Therefore DYABOLA needs to run either in full screen mode or with a modified version of the "Lucida Console" system font, which has to be installed separately and can be downloaded from our site. Installing the modified font can have negative influences on other DOS programs, but it is possible to install it for DYABOLA and run all other programs with another screen font like "Rasterfont" or "Andale Mono". (see also [Window Settings incorrect](#)).



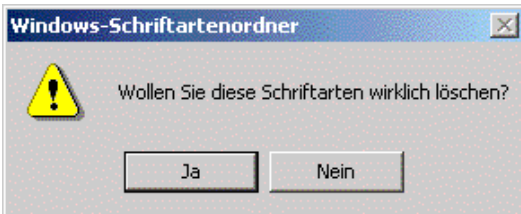
Please execute the following steps for installing the modified "Lucida Console"

**1.** Download the file "lucida.zip" [here](#) directly or in our [download section](#). For opening you'll need the program Winzip or something similar. "lucida.zip" contains both fonts the original one and the modified. So if you want to undo the installation, you are free to do it at any time. The following steps have to be performed in both cases, when installing and uninstalling the modified font.

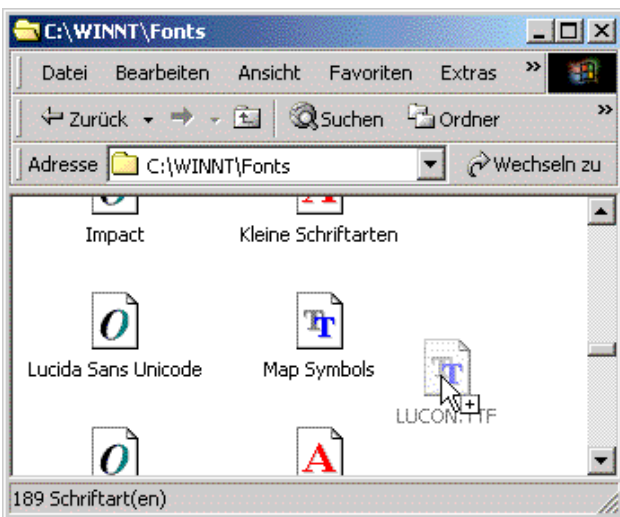
**2.** Before installing the new font we have to remove the font with the same name, which is already installed on every windows computer. Open the folder C:\Winnt\Fonts (or C:\Windows\Fonts), point on the File "Lucida Console" or "lucon.ttf" and click with the RIGHT mouse button. The so called context menu appears, where you choose "Löschen" or "delete".



The Dialogue "You really want to delete these fonts?" appears, which you confirm with "yes".



**3.** Now it is possible to install another font named "Lucida Console" on your system. Therefore choose the modified or in case of deinstallation the original "lucon.ttf" from the downloaded Zip-File and move it into the still open folder "C:\Winnt\Fonts" (or "C:\Windows\Fonts"). After a short moment the new font is installed and you can close the window.

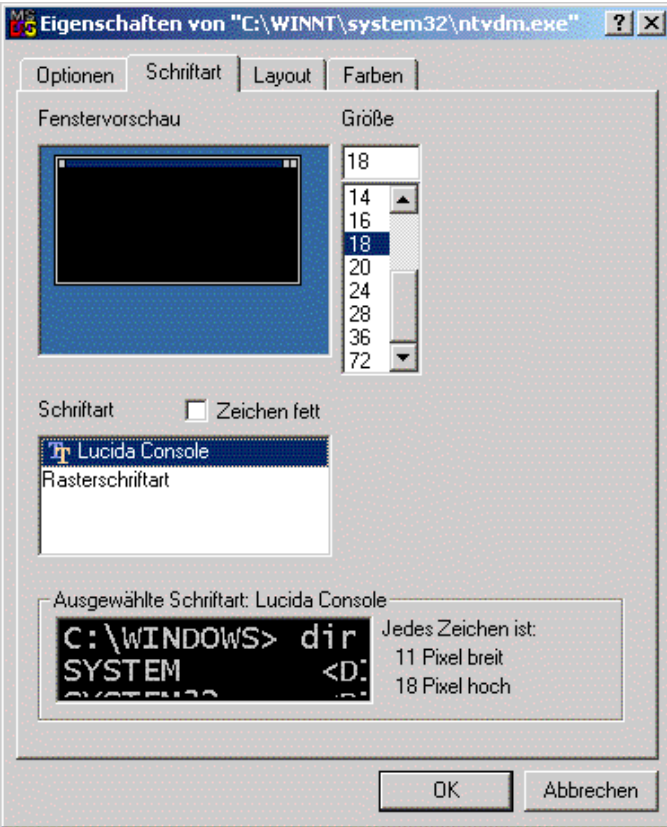


**4.** Start DYABOLA now and change into window mode with ALT+ENTER if the program starts in full screen mode. Point onto the upper left corner of the DOS window with your mouse and click RIGHT. Choose the option "Eigenschaften" or "preferences..."

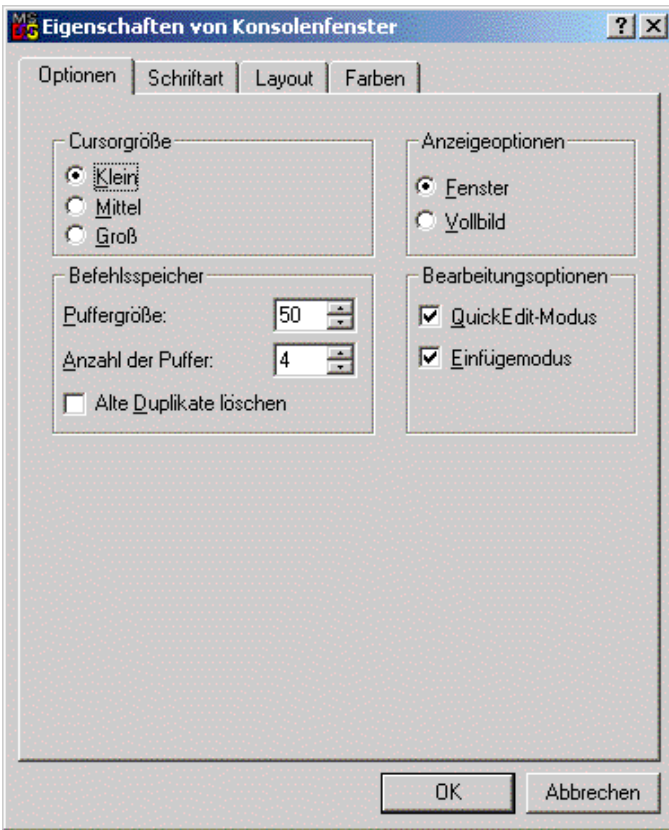




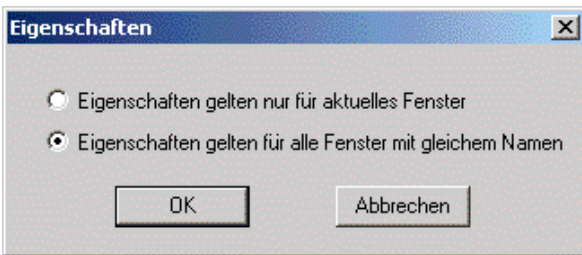
Open the register "Schriftart" or "Font" and choose "Lucida Console" and preferable font "Größe" or "size" 18.



In register "Optionen" or "options" you choose "Fenster" or "window" instead of "Vollbild" or "full screen"



After confirming our settings with OK another dialogue appears in which you choose "Settings are guilty for all windows with the same name" and confirm with OK once again.



From now on DYABOLA starts in window mode with the modified font.

UP

## Startup Language

If you prefer another user interface language than german and do not want to modify it each time, you can change the default language in the startbatch file "D(.bat)" in your DYABOLA start folder.

Open the folder, click with the RIGHT mouse button on D(.bat) and choose the option "Bearbeiten" or "Edit".



In the line which is beginning with "dya" change the parameter /L1 according to

the preferred language. You have the following possibilities.

/L1 = german  
 /L2 = english  
 /L3 = french  
 /L4 = italian  
 /L5 = spanish (Subject Catalogue of the DAI Madrid only)

Close the window for e.g. with the symbol in the upper right corner and confirm with "yes". From now on DYABOLA starts with the new preferred language.

**IMPORTANT:** Please remember, if the language of the user interface is changed, the language of the entire data is not going to change. Data language is heavily dependent from the database project. For e.g. it is possible to find english, german, italian and latin data inside the CENSUS, but for this project the user interface is only available in english or german.

UP

## Explanation of the parameters of "dya.exe"

After installation, in the batch "dya\d.bat" you will find the complete command line of the program "dya.exe". Under "UP" you'll find how to modify the parameter /L. In the same way you can change the following parameters also:

### Redirecting print jobs:

/P3=1 directs the print job from the parallel port LPT3 to LPT1.

/P3=2 directs the print job from the parallel port LPT3 to LPT2.

The first setting is recommended, because LPT1 is the default port for printers in windows.

### Custom folder for temporary results:

/C... directs results files (temporary files) to another, e.g. a local drive. This is useful if you are running DYABOLA in a network. For e.g.: /CF:\temp directs all results to the folder F:\temp. Please notice the explanations concerning saving, loading and exporting results in chapter "Tools".

### Database files are installed on a different drive than the program "dya.exe":

/D... searches for databases that are located on another drive. If your data is for e.g. on drive D:\dya, the parameter has to be "/DD:\dya". Please notice that the text data of all installed databases have to be on one drive.

### Database-Images spread over more than one drive:

/I... refers to all possible drives on which pictures may be located. For e.g.

/ICDE. Unlike text data the images can be spread all over your system; only the DYABOLA specific folder tree is necessary and must exist on each drive: for e.g. ...dya\dyabola\dya\_\*\*\*\tiff768\...

### Data display acceleration:

/A accelerates the display. If a title of the database is displayed, normally the full content of all data sheets of the title is loaded. /A changes this setting: the content of a data sheet will be loaded in the moment you open the sheet.

Therefore a title with many data sheets opens faster.

UP

## Startpif not correct

Since Microsoft refuses to reveal the file format of PIF files, installation problems constantly occur: PIF files are required in order to open a DOS box. The format of these files is constantly changed by Microsoft. This prevents DYABOLA from automatically adjusting itself optimally to your system. You can avoid this problem with the following steps, which are admittedly not always easy.

**1.** Delete the two files "startdya(.pif)" and "autoexmy.nt" from the program subdirectory on your hard disk. Then try starting the program with "dyastart". dyastart now automatically recreates the two previously deleted files, and they now have settings adjusted to your system. If the system still does not start, please continue with step 2.

**2.** (Explanation) Before we can continue with step 2, the problem must be explained in a little more detail. DYABOLA for NT actually consists of two programs, a database program which makes the information accessible and a program for displaying pictures. The former runs under DOS, the latter under

Windows. The problem is usually to be found in the incorrectly configured PIF file. To begin with, the files involved are listed and explained here, then the further procedure will be described. The files are all located in "\dya".

dyastart.exe	With this program you start DYABOLA. It views images and starts a DOS-box and the inquiry program together with the following files. dyastart.exe needs the PIF-file startdya(.pif) in the same root (Icon = MS-DOS-symbol).
startdya(.pif)	This PIF-file starts a DOS-box with the autoexec file autoexecmy.nt. It's a copy of the file _default(.pif) from C:\WinNT\.
autoexmy.nt	This file is a copy of autoexec.nt from C:\WinNT\system32\, merged with the line "lh btrieve /p:2048". This line starts the database machine in high memory. Therefore conventional memory stays free for the inquiry program.
d.bat	In the end the batch file d.bat starts the database, after the picture viewer and the DOS-box are already started

**3.** To begin with, we test whether the database works without picture display: To do this, we start an "MS-DOS prompt" (in the start bar under the Programs folder) and change to the \dya subdirectory on the respective hard disk. Now type "btrieve /p:2048" and confirm by pressing the return key. By doing this, you have started the database engine. Now type "d.bat" and confirm again by pressing the return key. The first screen of the database should now appear, which you can exit again by pressing "Quit". (You can continue with step 4.) If the database does not start, this can only be because the wrong drive has been entered. Open "d.bat" with the Notepad and check whether in the line "DYA.EXE /A /D?:\DYA /ICD" the ? has been replaced by the drive letter of your program hard disk (in our case, this would mean "/DD:\DYA"). If necessary, repeat step 3.

**4.** Close the DOS box and try to start the file startdya(.pif) with a double click in Explorer. The database should now start. In order to test the picture display, leave the database again by pressing Quit and continue with step 6. If the database still doesn't start, continue with step 5.

**5.** The PIF file startdya can have several errors which can be eliminated by manual configuration of the file. In the following, this configuration is described and the errors connected to the individual settings are explained. Position the mouse pointer in Explorer on the file startdya(.pif) (can be recognised by the MS-DOS symbol) and press the right-hand mouse button. From the context menu that appears select the entry "Properties". A window now opens with the name "Properties of startdya". The following table lists all of the entries to be checked in the folders of this window.

Register/Option	Entry	Explanation	Possible difficulty
Program / Line:	?:\DYA\d.bat	The two entries show the root in which the program files are located. ? stands for the hard-drive, in which the files are saved.	If the root is wrong, after starting startdya(.pif) a DOS-box opens and closes again at once.
Program / Root:	?:\DYA		
Program / Windows NT... (press) / autoexec-filename:	?:\DYA\autoexmy.nt	In a separate window "Windows NT-Options" the root of autoexmy.nt has to be inserted. ? stands for the hard-drive, in which the file is saved.	If the root is wrong an error appears: "Die Systemdatei ist nicht geeignet ..." with the title "MS-DOS 16-bit-Teilsystem". IMPORTANT: This error also appears, if there is no autoexmy.nt at all. (Step 6)
Memory / (EMS)	no	Entries on EMS memory and XMS memory have to be "no", because otherwise btrieve can not use the full memory	After starting startdya(.pif) there will be a short beep and "record manager inactive" is shown. Btrieve could not be loaded into high memory. If the error occurs, with the right entry follow step 7.
Memory / (XMS)			

After checking them, close the window by pressing OK. If you now restart startdya(.pif), it should function (continue with step 8). If there is still an error, refer to steps 6 and 7.

**6.** In very rare cases, even though step 1 has been performed, autoexmy.nt is still not present. When startdya(.pif) is started, a Windows error then occurs with the title "MS-DOS 16-bit part system" with the text "...The system file is not suitable...". In this case, copy the file autoexec.nt from the subdirectory C:\WinNT\system32\ into the subdirectory \dya and rename it autoexmy.nt. Now open this new file with Notepad and enter the line "lh btrieve /p:2048" as the second line (after "echo off"). The error should now have been eliminated. (If no further errors occur, you can continue with step 8.)

**7.** If you have performed all of the other steps, and despite the correct entry in the memory folder under "Properties of startdya", the error "Record manager inactive" occurs accompanied by a short beep, the computer cannot load the database engine into the upper memory sector. Open autoexmy.nt with Notepad, and enter "rem " (the space is important) in front of the line "lh btrieve /p:2048". Save the file and also open the file d.bat with Notepad. Here, enter the line "btrieve /p:2048" as the first line. Save this file and try executing startdya again. The program should now function. If you still experience problems, please send us a mail under [info@dyabola.de](mailto:info@dyabola.de).

**8.** Start Dyastart and follow the instructions under "[Starting the Program](#)".

UP

## No picture display: I/O error 103

On some computers, the picture display may show an error with the text "IO error 103" when you switch from the appropriate database entry into display mode. The reason for this is that the pictures keep their "write protect" status when copied from the CD-ROM.

In order to eliminate this problem quickly, the best thing to do is to open an "MS-DOS prompt" (in the start bar under the Programs folder), change to the \dya subdirectory and enter the following command: "ATTRIB -r \*.\* /s". If you have distributed the pictures over several hard disks, you must run this command in the respective subdirectories as well. This removes the write protection and the pictures become visible.

UP

## No picture display: wrong path in d.bat

Some DYABOLA databases are larger than 2 GB. The database thus exceeds the maximum size of a DOS-formatted hard disk. You therefore have to distribute the pictures from the CD-ROMs to several partitions. The inquiry program searches for the pictures automatically in the partitions "C: "; "D: "; "E: ". If you have copied pictures into other partitions, you must adjust the parameter /I in the file dya\d.bat by adding the respective partitions (standard: /ICDE; example: /ICEF). See "[Parameters of Dya.exe](#)".

UP

## Printer configuration

As a standard setting, DYABOLA sends print jobs to the printer port LPT3. If your printer is connected to another port, add another parameter to the file dya.exe in the start batch d.bat ([see above](#)), in order to redirect the print job to LPT1 or LPT2. You can initialise the printer from within the program by pressing "Shift+F10" at any point in the program to call up the menu of special functions and executing the appropriate item ([see section 3.4](#)).

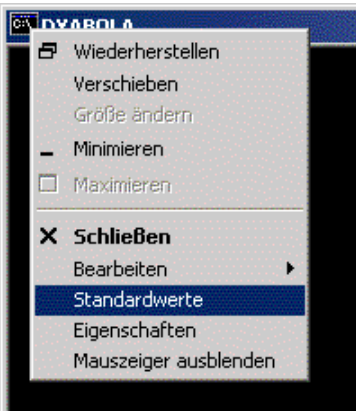
UP

## Window settings incorrect

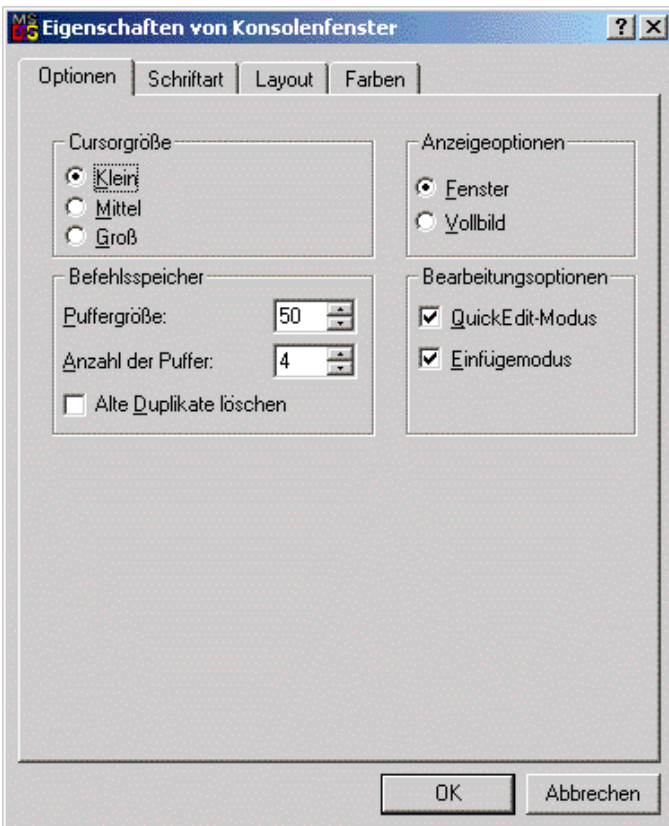
Like with every release Windows 2000 Prof. brings some on the first sight strange news with it: For e.g the standardsettings of the window buffer are different from those of the window size. Therefore console programs like DYABOLA cannot be displayed correctly.

For displaying Dyabola correctly the following settings have to be made:

- 1.** Start Dyabola and change from full screen to window mode by pressing ALT+ENTER if necessary.
- 2.** Click with the RIGHT mouse button onto the upper left corner of the window and choose the option "Standardwerte" or "standard settings" (This option is new in Windows 2000).

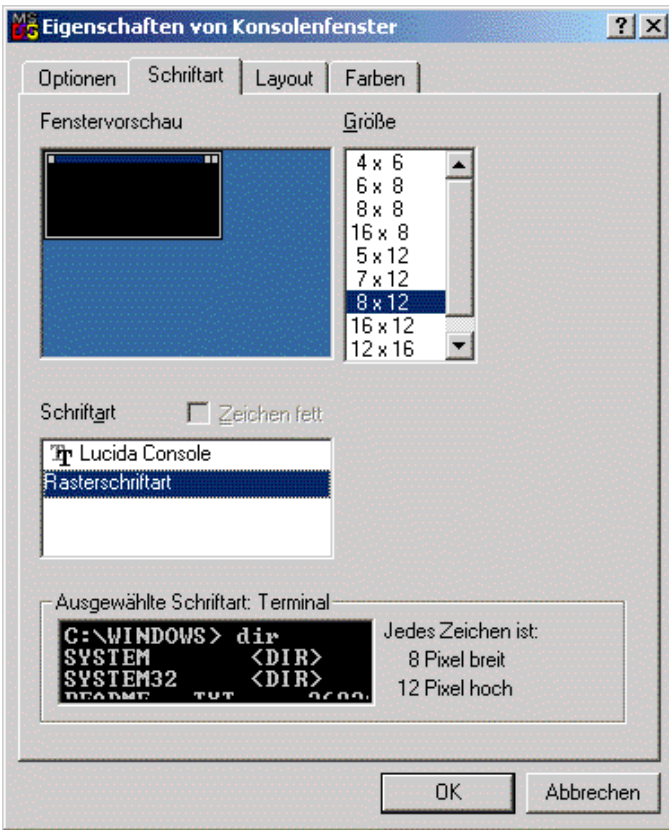


The Dialogue "Eigenschaften von Konsolenfenster" or "Options of Console Window" appears (it sets the standard settings of ALL console windows). Be sure, that the settings are as following:  
In register "Options": Display Options: "Window"

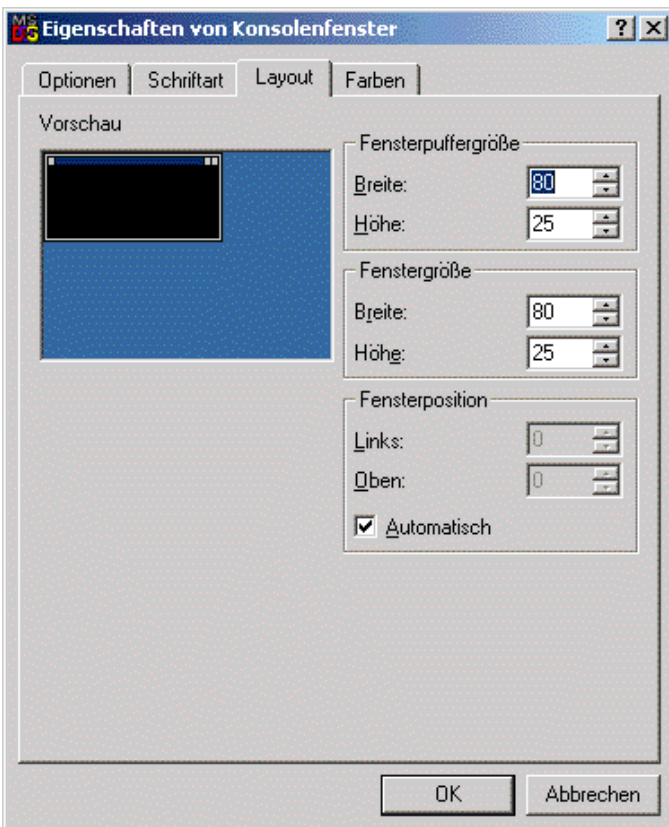


In register "Font": "Rasterfont" or if available "Andale Mono".





Finally and most important in register layout: window buffer AND size: width = "80" and height = "25".



Confirm with OK.

**3.** Click with the RIGHT mouse button onto the upper left corner of the window and choose the option "Eigenschaften" or "Properties".



The dialogue "Properties of C:\WINNT\system32\ntvdm.exe" opens (standard settings for all console windows with the name Dyabola). Be sure the settings are as following:

In register "Options": Display Options: "window" (like the standard settings) oder "full screen"

In register "Font" "Lucida Console" and preferable font size "18"

In register "Layout": Window buffer AND size: width = "80" and height = "25".

Important: Please notice, if you choose "window" in the display settings, you should read the explanations concerning "[Strange Characters](#)" by all means.

UP

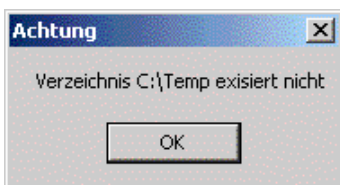
## Image Viewer doesn't work properly

With the new 2001 release you are receiving a new program version of the Dyabola Image Viewer, which is compatible with Windows 2000 Prof.. Older Versions of "Dyastart.exe" are not 100% compatible. When opening a picture by pressing F or ALT+F the image is loaded into the Image Viewer, but the operating system does not change from the database to the viewer. The same problem can appear in the different direction. You see the image, but you cannot get back to the database by pressing ESCAPE. The reason is Windows 2000 is able to manage two applications in the same time on the one hand, but on the other it does not move the "entry focus" from one window to another. If you do not have the last version of the retrieval program, you are able to get it in our [download section](#).

UP

## Folder C:\Temp does not exist

The Program Dyastart needs the folder "C:\Temp". Because this folder does not exist under Windows 2000 Prof. by default, it is possible to receive the error message "Folder C:\Temp does not exist":



Solution: Open the drive C:\ for e.g. with "My Computer" and choose New/Folder from the menu "File". Name the new folder "temp" or "Temp" and try to start DYABOLA again. Maybe you have to shut down and start your computer again, before your operating system accepts the changes.

UP

## No image databases under Windows 95/98/Me

The Windows Versions 95, 98 und Millenium Edition are not able to handle two applications in the same time. Therefore the image databases do not work with this systems. Please use Windows NT or 2000 Prof.!

UP



## Dyabola on MS-DOS computers

The CD-ROM-Version of DYABOLA is a DOS-program. To the most people this sounds like a living fossil, but in reality it is not a disadvantage. The program speed is not influenced by an overload of display graphics. Retrieval speed is not dependent on the operating system but first of all on processor speed and overall performance of your hardware. We recommend running DYABOLA on Windows NT or 2000 Prof. to have optimal performance of the DOS environment. The faster the processor the more content you will be.

### Program is slow:

If you are really going to run DYABOLA on a DOS computer, check whether the DOS program "smartdrv.exe" has been loaded properly. This program is to be found either in the DOS or in the Windows subdirectory. It provides for quicker hard disk access.

Since 1997, the inquiry program supplied has been greatly expanded in its range of functions. This program is designed for navigation especially in highly complex text and picture databases ([CENSUS](#), [Grabreliefs](#) etc.) and has taken many years to develop.

The program requires a high computing capacity and rapid data access. The DOS-UTILITY "SMARTDRV.EXE" increases the speed of hard disk access under DOS and Windows 3.xx. This program is usually to be found in your DOS or WINDOWS subdirectory. Check whether "SMARTDRV.EXE" really is available on your system.

Make sure to load the DOS utility "SMARTDRV.EXE" on your computer before you start DYABOLA. "SMARTDRV.EXE" is normally called up by the DYABOLA start batch "d.bat". However, by performing individual test steps, check whether "SMARTDRV.EXE" really is loaded and loaded correctly on your computer.

Our request to the head of data processing: Check the correct functioning of "SMARTDRV.EXE". If possible, load this utility into the upper memory sector. DYABOLA will be very grateful to you.

### Too little memory:

Please make sure that at least 30 files and 30 buffers are assigned in your computer's config.sys. The appropriate lines in config.sys must read:

```
files= 30
```

```
buffers= 30
```

It is very important that as much working memory (RAM) as possible is available on your computer. DYABOLA requires at least 540 KB RAM to execute the program. Test how much RAM is available before you start DYABOLA, using the DOS command "mem"!

Within DYABOLA, the remaining memory can be determined at any point in the program by pressing the key combination "Alt+F1". Close any memory-resident applications and drivers! Or try loading these applications into the upper memory sector ("loadhigh")! Please refer to your MS-DOS manual.

UP

## Dyabola and Citrix Metaframe

It is possible to run DYABOLA including the full functionality on a Citrix Metaframe platform and using it from remote computers. It has been tested by Biering & Brinkmann, that Btrieve runs without problems in this environment. We recommend Windows 2000 Server. Please notice, that the client session has to be an entire windows session, which can be closed with poledit or something similar. It is not sufficient to transmit the Dyabola application only. Dyabola with Image Viewer consists from two applications. Please notice further:

1. On serverside the modified font "Lucida Console" should be installed (see "[Strange Characters](#)"), because Citrix does not support full screen mode.
2. Temporary result files should be saved on clientside. Therefore you should choose a drive which exists on every client. Change the parameter /C in the batch file D(.bat) as explained in "[Parameters of "dya.exe"](#)" (e.g. /CC: dya).
3. The driver of the client printer (preferable Epson) has to be on serverside too. If you have further questions please contact [us](#) (we are able to provide solutions from other institutions also).

UP

## DYABOLA on a Novell network

If you want to operate DYABOLA on a Novell NetWare™ network, you must check whether the necessary btrieve environment has been loaded on the server. This btrieve database processor is part of the Novell™ software (up to version 3.12). For installation, you must be logged in as "supervisor", i.e. be authorised to write to the "root" F: and create new subdirectories. (Caution: In "d.bat", substitute the line "btrieve /P:2048" for the name of the btrieve shell of your Novell NetWare version (under NetWare 3.xx "brequest"). However, because Microsoft has incorporated a Novell client in its standard operating system, which provides the performance of a 386 with 50 MHz on a 300 MHz Pentium II, it is recommendable to download the free NT client from Novell from the Internet.

UP

## DYABOLA on a Windows NT network

If you want to use DYABOLA as a network database on a Windows NT server, you must acquire and install the software "Btrieve Server" for NT. An alternative is to use a Novell server with NT clients, but we recommend using [Citrix Metaframe](#).

UP

## Dyabola on a CD-ROM server

Since the august 2001 release, the size of all DYABOLA-Databases is bigger than the capacity of a normal CD-ROM. The delivered CD-ROMs contain only compressed data. Therefore it is necessary to install DYABOLA on hard disk. It is possible to get a DVD version of DYABOLA. If you are interested in this solution please contact [us](#).

UP



UP

USER MANUAL

copyright 2001 by Verlag Biering & Brinkmann  
Postfach 45 01 44, D-80901 München  
Fax +49-89-32 35 21 82, E-Mail: [info@dyabola.de](mailto:info@dyabola.de)  
about



## 2.4 Starting the Program

WEB version  
CD-ROM version

### Starting the WEB version

Start your internet browser, open the site [www.db.dyabola.de](http://www.db.dyabola.de) auf und click "Start":

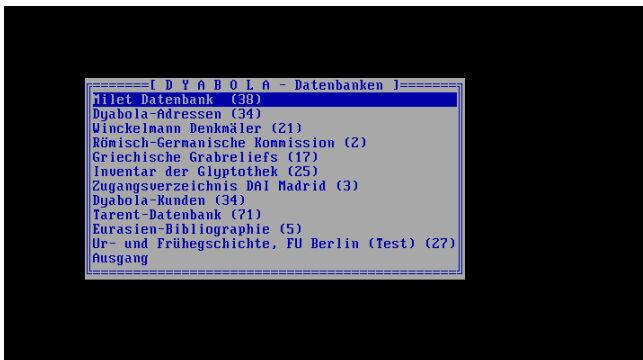


If the computer asks for a password follow the explanations in chapter "Installation" or contact your system administrator. Right after login you can immediately start your research. Further help is implemented inside the system.

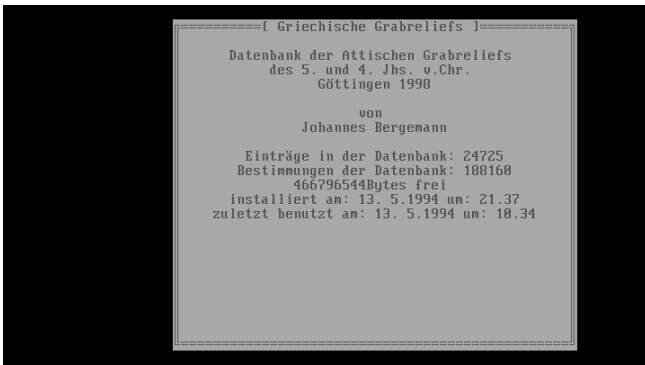
UP

### Starting the CD-ROM version

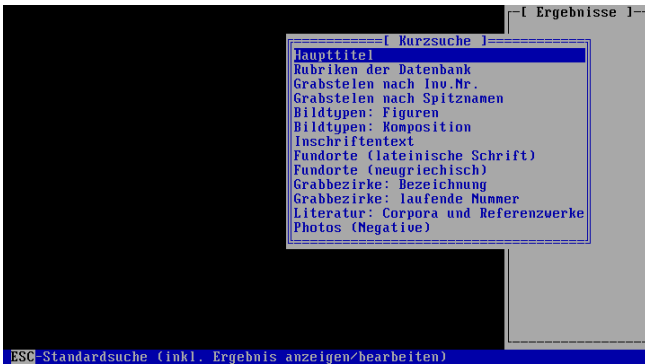
Double click on the DYA icon. You can start DYABOLA with the box which then appears. If the DYA icon is not yet on your desktop, create a link to the file Dyastart.exe or D.bat (non image databases only) in the directory \dya. The first menu presents you with a list of all of the installed DYABOLA databases available to you. Position the cursor on the desired application and confirm by pressing "Return".



This takes you to the title page of the respective database, which you leave again by pressing "Return" once more.



Shortly afterwards, the so-called "Quick search menu" of the respective database appears.



From this point onwards, the separate manual for the database in question will help you further. These manuals use examples to introduce you to the way in which the respective database functions. We recommend that you work through them, as they not only tell you about the functions of DYABOLA, but will also help you to quickly grasp the depth of content of the particular database. More detailed questions are dealt with here in the DYABOLA User's Manual.

UP



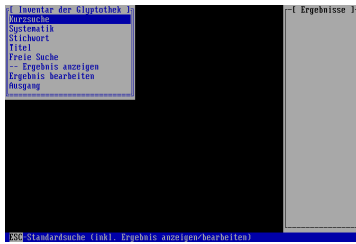
UP

USER MANUAL

copyright 2001 by Verlag Biering & Brinkmann  
Postfach 45 01 44, D-80901 München  
Fax +49-89-32 35 21 82, E-Mail: info@dyabola.de  
about

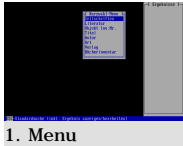
## 3.1 The Main Menu

- Quick search
- Subject (Classifier tree)
- Key-word
- Titles
- any part of title/comment
- Display result
- Tools
- Quit



The Main menu can be called up from all points in the program by pressing "Escape" (you may have to press it several times). Move the cursor to the desired item with "Arrow up/down" and select by pressing "Enter". The following menu items are available:

### Quick search



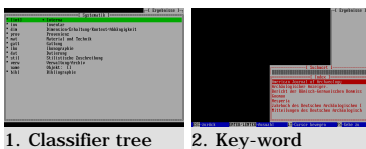
▶ see 3.2

1. Menu

1. With "Arrow up/down", select one of the options from the menu and press "Enter".
2. Follow the explanations in [section 3.2](#) (Quick search menu)

UP

### Subject (Classifier tree)



1. Classifier tree

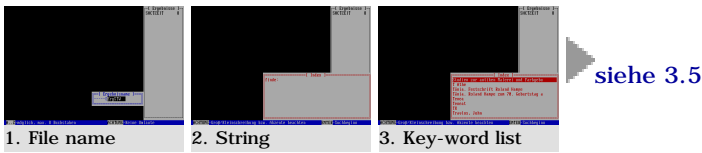
2. Key-word

▶ see 3.5

1. Move around the classifier tree with "Arrow up/down" and the "Enter" and "Escape" keys and select a heading by pressing "Shift+Enter". In the case of starred headings, press "Shift+F1" to call up a comment, which you can leave again by pressing "Escape". If you select a heading without a key-word list ("[]"), you will directly obtain a result of all titles to which the respective heading or those subordinate to it are allocated. If you select a heading with a key-word list, continue with the selection of the key-word(s).
2. In the key-word list, position the cursor either with the first letter of the desired key-word (pay attention to upper/lower case) or with "Arrow up/down". You can mark several key-words in the list by pressing "Left shift+Arrow up/down". Either start the search by pressing "Enter" or form a result over the entire key-word list by pressing "Escape".
3. Follow the instructions in [section 3.5](#) (Title card)

UP

## Key-word



1. The "Key-word" function in the Main menu searches through all key-word lists of the active database simultaneously. For reasons of speed, the search differs from the procedure in an individual key-word list. First of all, enter the name under which the result is to be saved and press "Enter" (no more than eight digits, no diacritic characters).
2. Enter the character sequence to be searched for and press "Enter" (all characters of the extended DYABOLA character set allowed). With this input, you position yourself in a key-word list which is only created from all available lists with the aid of your search word.
3. Position yourself finally in the list with "Arrow up/down" or press "F5" to enter a new character sequence. If necessary, mark several key-words with "Left shift+Arrow up/down" and conduct the search finally by pressing "Enter".
4. Follow the instructions in [section 3.5](#) (Title card)

UP

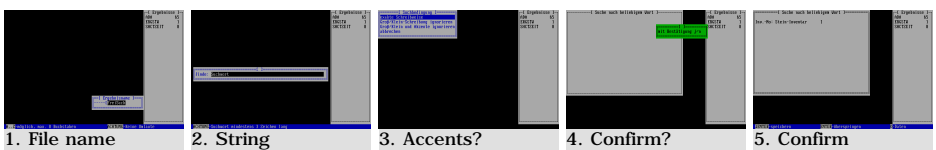
## Titles



1. This function only covers the title texts of the main titles of a database. The main titles of a database are mostly the various sections, such as object or literature lists. However, in large pure literature databases, all literature titles can be of the main title text type. Position yourself in the list either with the first letter of the title text you are looking for (pay attention to upper/lower case) or use "Arrow up/down". With "Left shift+Arrow up/down" you can mark several title texts in the list. Start the search by pressing "Enter".
2. Enter the name under which the result is to be saved and press "Enter" (no more than eight digits, no diacritic characters).
3. Follow the instructions in [section 3.5](#) (Title card)

UP

## Any part of title/comment



1. Enter the name under which the result is to be saved and press "Enter" (no more than eight digits, no diacritic characters).
2. Enter the character sequence to be searched for and press "Enter" (all characters of the extended DYABOLA character set allowed).
3. Select whether or not upper/lower case and accents should be ignored and press "Enter".
4. Enter "y" (yes) or "n" (no) in order to search with or without the confirmation function. If you activate confirmation, you are given the option of taking up every title found to contain the sought after character sequence into the final result or of passing over titles not required.
5. If a title is found, you can look at the title card and its data sheets. Press "Enter" to pass over the title, "Shift+Enter" to take it up in the result. At the end of the search, the number of hits in the collection of titles is shown. Return to the Main menu by pressing "Enter".

UP

## --Display result



▶ siehe 3.5

1. Select a result from the results list with "Arrow up/down" and "Enter". In the list, you can see the file name of the result and the number of titles it contains.
2. Follow the instructions in [section 3.5](#) (Title card)

UP

## Tools



▶ siehe 3.3

1. Select a result from the results list with "Arrow up/down" and "Enter". In the list, you can see the file name of the result and the number of titles it contains.
2. Follow the instructions in [section 3.3](#) (Tools menu)

UP

## Quit



1. Select one of the installed databases from the menu with "Arrow up/down" and press "Enter" or exit DYABOLA by selecting Quit.

UP



UP

USER MANUAL

copyright 2001 by Verlag Biering & Brinkmann  
Postfach 45 01 44, D-80901 München  
Fax +49-89-32 35 21 82, E-Mail: [info@dyabola.de](mailto:info@dyabola.de)  
about

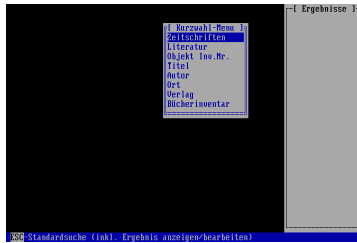


## 3.2 The Quick Search Menu

Direct result

Key-word search

Pre-linked search



The Quick search menu is easiest to reach via the Main menu. However, it also appears as a starting point when the program is started. Move the cursor to the desired item with "Arrow up/down" and select by pressing "Enter". The items of the menu vary from database to database. The fundamental types of function are explained here:

### Direct pre-defined result



If a title card appears in the Quick search menu directly after you have selected an item, this is a pre-defined result. It can be used to get to a certain point in the database tree quickly, e.g. to the list of journals, or to link different titles in the database tree that would take a long time to link under normal circumstances, e.g. the inventories of a museum collection.

**1.** Follow the explanations in [section 3.5](#) (Title card)

UP

### Key-word search



A key-word search in the Quick search menu can be both a reference to an individual heading with a key-word list in the classifier tree or a title text list, and a compilation of several such lists.

**1.** In the key-word list, position the cursor either with the first letter of the desired key-word (pay attention to upper/lower case) or with "Arrow up/down". You can mark several key-words in the list by pressing "Left shift+ Arrow up/down". Either start the search by pressing "Enter" or form a result over the entire key-word list by pressing "Escape".

**2.** Follow the explanations in [section 3.5](#) (Title card)

UP



## Pre-combined search



siehe 3.5

### 1. Key-word

In principle, this item combines two searches in one step. In the process, a certain reference to selected titles is sought. A typical example is the search for a "Book according to Author". Here, you first select the author(s) from the key-word list and then receive all appropriate books as a result. For the user, the procedure is equivalent to that of the key-word search

**1.** In the key-word list, position the cursor either with the first letter of the desired key-word (pay attention to upper/lower case) or with "Arrow up/down". You can mark several key-words in the list by pressing "Left shift+ Arrow up/down". Either start the search by pressing "Enter" or form a result over the entire key-word list by pressing "Escape".

**2.** Follow the explanations in [section 3.5](#) (Title card)

UP



UP

USER MANUAL

copyright 2001 by Verlag Biering & Brinkmann  
Postfach 45 01 44, D-80901 München  
Fax +49-89-32 35 21 82, E-Mail: [info@dyabola.de](mailto:info@dyabola.de)  
about

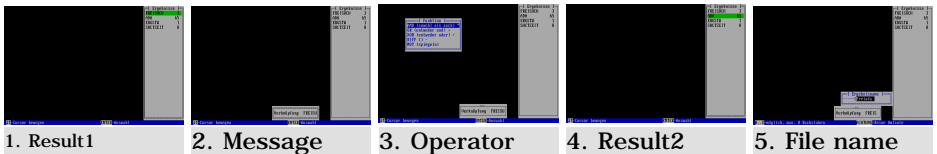
## 3.3 The "Tools" Menu

Combine  
Date range of Publication  
Sort  
Save, copy and rename  
Load  
Delete  
Export  
Quit



You can get to the Edit result menu from the Main menu. Move the cursor to the desired item with "Arrow up/down" and select by pressing "Enter". The following menu items are available:

### Combine



Please take note of the explanations on linked search in the introductory manuals. The correct use of the link operators is explained there. It is not possible, for example, to edit books with authors or documents with monuments - a person cannot at the same time be a book! You must therefore produce the necessary dependent results (e.g. "All books by an author" or "All documents on a monument").

1. Select the first result to be linked from the list with "Arrow up/down" and "Enter".
2. A message shows you this result once more. Continue with "Enter".
3. Select the necessary operator AND, OR, XOR or DIFF and press "Enter".
4. Select the second result to be linked from the list with "Arrow up/down" and "Enter".
5. Enter the name under which the result is to be saved and press "Enter" (no more than eight digits, no diacritic characters).
6. Follow the explanations in [section 3.1](#) (Main menu)

UP

## Date range of publication



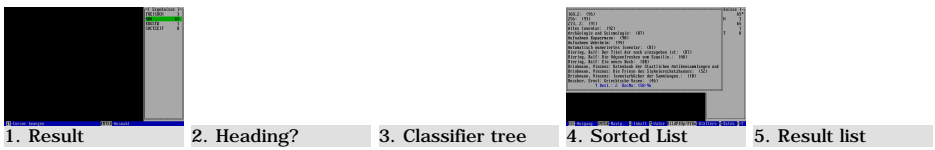
see 3.1

The function time restriction refers to all titles of a database with a search year. For example, all literature titles of the large literature databases have a search year. As the titles are generally given a search year when a new edition is published, the command is not available for the latest entries in all accessible entry versions (e.g. Reading room in the DAI Rome).

1. Select a result from the list with "Arrow up/down" and "Enter".
2. Fill in the following dialogue in the form "1998-01" and confirm by pressing "Enter" (a Year-2000 error does not occur. All titles from 1998 to 2001 are searched for).
3. Follow the explanations in [section 3.1](#) (Main menu)

UP

## Sort

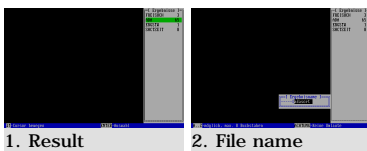


With the Sort function, you can sort a result according to the title text of the titles or according to any relevant heading with an attached key-word list.

1. Select a result from the list with "Arrow up/down" and "Enter".
2. Enter "y" (yes) or "n" (no) to select whether or not you wish to use a sorting heading from the classifier tree. If you select no, the result is sorted according to the title text and you can continue with step 4. If you select yes, follow step 3.
3. Sorting according to a heading with a key-word initially takes you to the start of the classifier tree. It does not jump automatically to a logical place, since a result to be sorted can consist of titles with a wide variety of different types of title text. In order to obtain a meaningful result, you must select a heading with a key-word from the headings tree relevant to the result. For example, this enables you to sort a result of objects according to old inventory numbers, insofar as a heading with the name Old inventory numbers is present and has been allocated.
4. As a final result of sorting, you receive a list in which each line represents a title. You can move through this list as in the contents list of a title card ([see 3.5](#)). If you have sorted the result according to title text, the respective title lines are shown in the list. In the case of sorting according to a heading with a key-word, only the key-word appears in each line.
5. If you exit the list by pressing "Escape", you will see the sorted result marked with a star in the results list. You can export this result to a printer or a file ([see below](#)), but you cannot save it as a Dyabola result.

UP

## Save, copy, rename

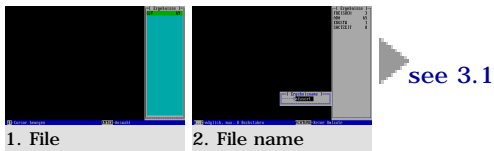


see 3.1

These functions relate to the results in the results list. For example, this means that you cannot copy a result into another program (e.g. word processing). By saving, you file the desired result under a selected name in the subdirectory #:\dya\dyaerg\; (# refers to the results drive allocated by the system administrator). From there, it can be loaded again into DYABOLA.

1. Select a result from the list with "Arrow up/down" and "Enter".
2. Enter the name under which the result is to be saved and press "Enter" (no more than eight digits, no diacritic characters).
3. Follow the explanations in [section 3.1](#) (Main menu)

## Load



With the Load function, it is possible to recreate results saved in a previous DYABOLA session. The procedure is equivalent to that for the commands Save, Copy and Rename. However, in this case, the selection list shows the files in the subdirectory #: \dya\dyaerg\; (# refers to the results drive allocated by the system administrator). In order to mark the difference, the list is shaded in Prussian blue. If the list is full and your results are no longer to be seen, delete or move unwanted results files from the subdirectory using the File manager or consult your system administrator.

1. Select a result from the list with "Arrow up/down" and "Enter".
2. Enter the name under which the result is to be saved and press "Enter" (no more than eight digits, no diacritic characters). Here, you have the option of allocating a different file name, for example, in order to prevent a newly created result with the same file name from simply being overwritten.
3. Follow the explanations in [section 3.1](#) (Main menu)

UP

## Delete



Delete removes a result from the results list within the program.

1. Select a result from the list with "Arrow up/down" and "Enter".
2. If you answer the question "Delete?" with "y" (yes), the result is deleted and you have the option of selecting another result from the list. From the list, you can return to the Main menu by pressing "Escape".
3. Follow the explanations in [section 3.1](#) (Main menu)

UP

## Export



The export target for results can be a printer, as well as various data storage media in drives A: (3.5 HD) and B: (5.25 HD or Zip), or a hard disk specified by the system administrator. On a disk drive, the results are filed with their file name.txt. On the hard disk, an export result is always present under the name dyabola.txt in the subdirectory #: \dya\dyaerg\. This prevents the serial export of large results, which is prohibited for reasons of copyright. For the same reason, the size of export results has been limited to 300 titles. That these measures are not without reason is shown by a case known to us in which a renowned classical studies literature database project "adopted" large amounts of data from a DYABOLA database.

1. Select a result from the list with "Arrow up/down" and "Enter".
2. Select the target drive or the printer to which the result is to be exported.
3. If you have selected a printer, you have the following selection to choose from: "Card" or "Card with data sheets" prints a section of the current screen memory. "Pre-defined formats" enables you to select one of several pre-defined formats.
4. Select one of the pre-defined formats with "Arrow up/down" and confirm by pressing "Shift+Enter". The pre-defined formats vary from database to database and in some cases are not yet defined or not envisaged.
5. If you use a printer, you are finally asked whether you want to use the EPSON-LQ mode. On an EPSON printer, it is possible to print all of the DYABOLA

special characters, which go far beyond the ASCII character set. If you do not have an EPSON printer, answer the question with "n" (no). The result is then exported to any other printer using the ASCII character set. If the result does not print, please refer to the notes in [section 2.3](#) or contact your system administrator.

**6.** To continue in the program, follow the explanations in [section 3.1](#) (Main menu); to further process the exported result, load the text file created (e.g. dyabola.txt) from the above-mentioned subdirectory using your chosen word processing program.

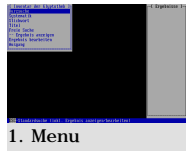
TIP: Marking and Copying (Drag&Drop) in Windows

Provided that you start DYABOLA under Windows, you have the option of copying a title card just displayed out of DYABOLA. Before starting DYABOLA, you must open the program into which you want to copy the title card. Then use "ALT+TAB" in order to change between the programs (DYABOLA carries an MS-DOS/console symbol; the DYA symbol belongs to the Start program and the picture display; for this purpose, you can close this program with "ALT+F4").

1. If DYABOLA is shown on the full screen, press the keys ALT and ENTER simultaneously. DYABOLA is now shown in a window.
2. Use the mouse to click on the symbol in the top left of the window bar.
3. In the menu that now opens, select "EDIT", and in the connected menu "MARK"
4. Using the mouse, you can now mark the section of the DYABOLA window that you wish to copy.
5. Press the ENTER key. The marked section is now saved in the WINDOWS Clipboard. In most WINDOWS programs, you can insert the contents of the Clipboard into your text by pressing the keys CONTROL and "v" simultaneously.

UP

## Quit



[siehe 3.1](#)

**1.** Follow the explanations in [section 3.1](#) (Main menu)

UP

UP

USER MANUAL 

copyright 2001 by Verlag Biering & Brinkmann  
 Postfach 45 01 44, D-80901 München  
 Fax +49-89-32 35 21 82, E-Mail: info@dyabola.de  
 about

## 3.4 The Special Functions Menu

Change language

Set printer

Change sort order

Polyhierarchic search on/off

Global key-word index on/off

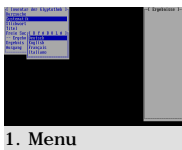
Search for all superior entries in the hierarchy

Show data sheets immediately on/off



The Special functions menu can be called up from all points in the program by pressing "Shift+F10". Move the cursor to the desired item with "Arrow up/down" and select by pressing "Enter". The following menu items are available:

### Change language



▶ continue

The program supports German, English, French, Italian and Spanish. If all languages in a database are not activated, DYABOLA changes to the database's standard language (e.g. English in the CENSUS). Both the program controls and the headings (subjects) appear in the selected language.

Important: As far as possible, the key-words are reproduced in the antique or local spelling. If scientific terms or non-proper names appear under key-words, these are in German in the case of the DAI's Subject Catalogue or in English in the CENSUS, for example, and are not reproduced in another language.

**1.** Select one of the languages offered from the menu with "Arrow up/down" and press "Enter".

**2.** Continue from where you have stopped. From the next display onwards, the new language will be used.

UP

### Set printer

▶ continue

To configure the printer, follow the instructions under [section 2.3](#).

**1.** As soon as you select this item, the printer will be initialised. Continue from where you have stopped.

UP

## Change in sort order

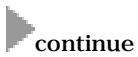


Normally, the search result of a literature database is shown in chronological order. However, if you would like the result to be displayed or printed out sorted according to authors' names, use this function. Important: This option is only available if you have called up the Special functions menu from the database selection. The database selection appears when you start the program or when you select Quit in the Main menu. .

**1.** As soon as you select this item, the sort order is changed. Continue from where you have stopped.

UP

## Polyhierarchic search on/off



Certain terms can be found at several points in the Headings tree. In the DAI's Subject Catalogue, we come across the heading "Baths" under Topography: Countries : Italy : Places : Rome, under Architecture : Monuments, but also under Early Christian-Byzantine culture : Architecture. If you want to search for all identical headings in one single step, you must first activate the option "Polyhierarchic search".

Important: If you are working on a public terminal, please turn off the Polyhierarchic search again when you have finished, as subsequent users will otherwise obtain unexpected results.

**1.** As soon as you select this item, the Polyhierarchic search will be (de)activated. Continue from where you have stopped.

UP

## Global key-word index on/off



**1.** As soon as you select this item, the general key-word index will be (de)activated. Continue from where you have stopped.

UP

## Search for all superior entries in the hierarchy



This function starts a search that includes all superior titles in the database tree. This is useful, for instance in the Grave relief database, if you are looking for a figure and want to immediately see the title cards of the reliefs in order to find out the location.

**1.** As soon as you select this item, the search of all superior entries of the hierarchy will be (de)activated. Continue from where you have stopped.

UP

## Display data sheets/dependent descriptors immediately



This function is used to immediately show the first data sheet of a title when a title card is displayed or a title is activated in a list. You can exit this data sheet by pressing "Escape".

**1.** As soon as you select this item, the first data sheet of a title will (will not) be shown immediately. Continue from where you have stopped.





## 3.5 The Functions of the Title Card

Change result title card

Show data sheets (links + dependent descriptors)

Show contents list (children)

Show parent entry (father)

Pooled result of parent entries

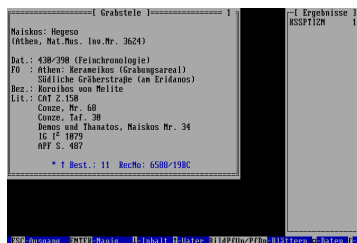
Pooled result of dependent entries

Restrict existing result

Last navigation steps

Show photo(s)

Call up Record Number



Various functions are available in the title card. You can call up the title card, for example, from the Main menu when you display a result or when you create a new result.

### Change result title card



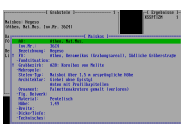
1. Titlecard

If you have created a new result, the first title card of the result initially appears. The number in the top right-hand corner of the title card shows you the position in the result. The total number of titles contained in the result can be seen in the results list on the right-hand side of the screen.

**1.** Use the "Picture up/down" keys to scroll through the various title cards of a result.

UP

### Show data sheets (links + dependent descriptors)



1. Data sheet

▶ see 3.6

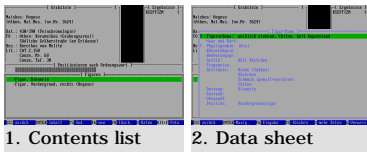
Please refer to the definition of data sheets in [section 1.3](#).

**1.** To scroll through the data sheets of a title, press "Arrow left/right".  
**2.** Follow the instructions in [section 3.6](#) (Data sheets)

UP



## Show contents list (children)



see 3.6

Open the Contents list of a title card with the "i" key or "Arrow down". Here, you can see all of the dependent titles of the current title in line form.

1. Position yourself with "Arrow up/down" or a search word (title text of the dependent title or children). Press "Enter" to call up the title card of a title in the Contents list. Make this a new starting point for your search by pressing "Enter" again or return to the Contents list with "Escape".
2. Press "Arrow left/right" to scroll through the data sheets of a title in the Contents list. Press the "m" key to view the respective data sheets of consecutive titles in series and scroll through the titles with "Arrow up/down".
3. Follow the instructions in [section 3.6](#) (Data sheets).

UP

## Show superior entry (father)

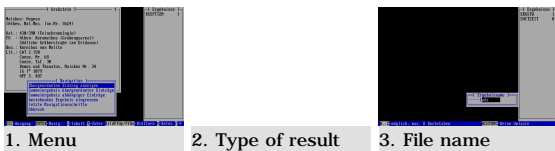


This item shows you the father title or makes it the new starting point for your search.

1. Press the "s" key once or the "Enter" key twice to show the superior entry on the bottom right.
2. Here, you can view the data sheets with "Arrow left/right" or make the title a new starting point for your search by pressing "Enter". You can also reach this point directly by pressing "Arrow up" instead of "s" or "Enter".

UP

## Pooled result of superior entries

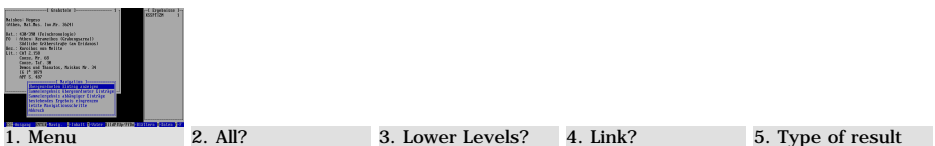


This function searches for the first superior title of all titles in the result.

1. Press the "Enter" key to call up a small menu, selecting the appropriate item with "Arrow up/down" and "Enter".
2. Select whether the available result is to be extended or replaced, or whether a new result is to be created and press "Enter".
3. If you have selected "Create new result", you must give a new file name (no more than eight digits, no diacritic characters).

UP

## Pooled result of dependent entries



1. Menu
2. All?
3. Lower Levels?
4. Link?
5. Type of result

This function searches all children dependent on the title or the titles of the result. The following points 2-6 do not appear in every search, as the program only asks the necessary questions.

1. Press the "Enter" key to call up a small menu, selecting the appropriate item with "Arrow up/down" and "Enter".
2. Answer the question "Pool references with regard to the entire result" by pressing "y" or "n", depending on whether you want to achieve a result over the visible titles or over the entire result.
3. A menu enables you to include all levels or only the first lower level of the

children and additionally asks whether or not the current title should be included in the result. Position yourself with "Arrow up/down" and confirm by pressing "Enter".

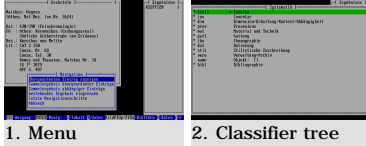
**4.** The "Linked entries" menu gives you the option of immediately following up links to the children. For example, it is very easy to find all monuments that are to be seen on the pages (= children) of a codex. Select a link or "no link" and press "Enter".

**5.** Select whether the available result is to be extended or replaced, or whether a new result is to be created and press "Enter".

**6.** If you have selected "Create new result", you must give a new file name (no more than eight digits, no diacritic characters).

UP

## Restrict existing result



see 3.1

1. Menu

2. Classifier tree

### IN PREPARATION

Here is a simple way of further restricting your result.

**1.** Press the "Enter" key to call up a small menu, selecting the appropriate item with "Arrow up/down" and "Enter".

**2.** Select a heading or a heading with key-word from the classifier tree. As a result, you receive the intersecting data (AND-link) of the given and the new result.

UP

## Last navigation steps (Navigation history)



1. Menu

2. Selection

The main and starting points you last selected in the navigation can be displayed as a list in a separate window.

**1.** Simply press the "n" key or the "Enter" key to call up a small menu, selecting the appropriate item with "Arrow up/down" and "Enter".

**2.** Select one of the last navigation steps with "Arrow up/down" and "Enter" to jump back to a point in the navigation to which it would otherwise be awkward to return..

UP

## Show photo(s)



see 3.7

**1.** Press "f" to show all photos linked to a title. In the Contents list, "f" is the letter used to position within the list. Use "Alt+f" here instead.

**2.** Follow the instructions in [section 3.7](#) (Picture display)

UP

## Call up record number



1. RecNo

In a separate window, you can jump to a title whose record number you know.

**1.** Press "F2", and enter the desired record number. Confirm with "Enter".

## 3.6 The Functions in the Data Sheet

Resolve entry (link)

Resolve entry (dependent descriptor)

Restrict /extend existing result

Pooled result on the selected entry

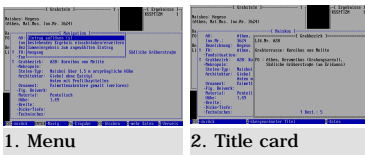
Show photo(s)

Change/exit data sheet



The data sheets of a title can be reached from its title card with "Arrow left/right". The following functions are available:

### Resolve entry (link)



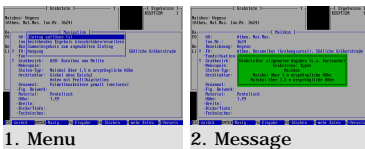
see 3.5

This function shows you the title card of the linked title or makes it the new starting point for your search.

1. Press the "s" key once or the "Enter" key twice to show the superior entry on the bottom right.
2. Here, you can view the data sheets with "Arrow left/right" or make the title a new starting point for your search by pressing "Enter". You can return to the data sheet by pressing "Escape".
3. If you have made the title your new starting point, follow the instructions in section 3.5 (title card).

UP

### Resolve entry (dependent descriptor)

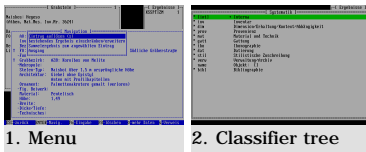


This function shows you the classifier tree resolution of the allocated dependent descriptor.

1. Press the "s" key once or the "Enter" key twice to show the resolution of the classifier tree.
2. The message shows you all of the levels of the systematic structure superior to the dependent descriptor. Exit by pressing "Escape".

UP

## Restrict/extend existing result



▶ see 3.1

### IN PREPARATIONS

Here is a simple way of further restricting or extending your result.

1. Press the "Enter" key to call up a small menu, selecting the appropriate item with "Arrow up/down" and "Enter".
2. Select a heading or a heading with key-word from the classifier tree. As a result, you receive the intersecting data (AND- or OR-link) of the given and the new result.

UP

## Pooled result on the selected entry



This function searches all of the links dependent on the titles of the result that match the selected ones. The following points 2-5 do not appear in every search, as the program only asks the necessary questions.

1. Select a link with the bar cursor ("Arrow up/down") and press the "Enter" key to call up a small menu, selecting the appropriate item with "Arrow up/down" and "Enter".
2. Select whether you want to find all other titles to which there is a link with "All others that refer to this", or whether you want to find all linked titles with "Pooled result of all entries". Confirm by pressing "Enter". (In the first case, starting with a monument title you search all other monuments to which the document is linked; in the second case, all documents that are linked to the monuments of the result.)
3. The "Linked entries" menu gives you the option of immediately following up links to the entries. Thus, it is very easy, for example, to find all monuments that are to be seen on the documents (=links) of an artist (=titles). Select a link or "no link" and press "Enter".
4. Select whether the available result is to be extended or replaced, or whether a new result is to be created and press "Enter".
5. If you have selected "Create new result", you must give a new file name (no more than eight digits, no diacritic characters).

UP

## Show photo(s)



see 3.7

1. Position the bar cursor on a link with "Arrow up/down" and press "f" in order to show all photos linked to this link (a photo is not available on every link!). Follow the instructions in [section 3.7](#) (Picture display).

UP

## Change / exit data sheet



see 3.5

1. Use "Arrow right/left" to change between the different data sheets. Press "Escape" to get to the title card. Follow the instructions in [section 3.5](#) (Title card).





## 3.7 The Picture Display

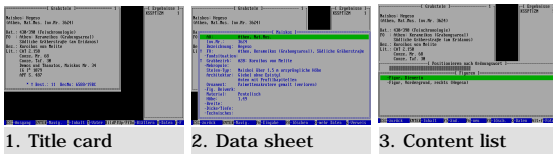
### Calling up the picture display

- The reference list
- Change display size
- Modify display
- Double display
- Overview display



The functions of the picture display are always available when you can see a picture. Move the mouse pointer to the picture and press the right-hand mouse button to open a context menu.

### Calling up the picture display



1. Title card

2. Data sheet

3. Content list

Please note that you can never tell to begin with whether a photo has been linked at all. Thus, you will no doubt sometimes press the "f" key, without a photo being shown! Don't let this disturb you. Not all entries have a picture documentation appended at present.

- 1.** You can display photos by pressing the "f" key if only the card form of an entry is shown. If several photos are linked, you can scroll through the photo collection with "Arrow up/down" (previously Picture up/down).
- 2.** If the cursor is positioned in a data sheet on a reference to which a photo is in turn linked, you can also display this photo by pressing the "f".
- 3.** If you are in a Contents list, you must press the key combination ALT + "f" in order to display any photo that might be linked.

UP

### The reference list



continue

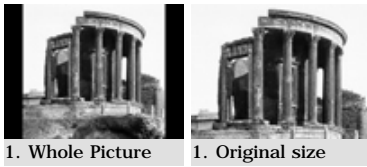
1. Menu

The reference list contains at most 16 pictures and is used for comparative viewing in the double and overview display

- 1.** In the context menu related to the picture (right-hand mouse button), you can add a picture to the reference list or remove one. In addition, you have the option of deleting the entire reference list.

UP

## Change display size



The function "Whole picture/Original size" shows a digital picture in different sizes.

1. "Whole picture" displays the picture zoomed to screen size.
2. Original size displays the picture in its true pixel size, in other words one pixel of screen resolution is equal to one pixel of the scan.

UP

## Modify display



Three options are available for temporary picture processing.

1. "Increase contrast" can prove useful when viewing written documents.
2. "Increase sharpness" is used to better distinguish lines in fine line drawings, for example.
3. "Increase brightness" enables you, for example, to better study shaded areas whose fine nuances are not visible to the human eye under normal circumstances.

UP

## Double display

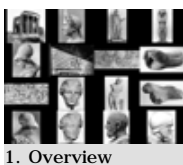


In the double display mode, two pictures are always shown next to each other, just like a double projection in a lecture. However, the left-hand picture remains in place and only in the right-hand half of the display can you scroll through previously marked pictures. The fixed left-hand picture can at all times be exchanged for the picture just appearing on the right. This means that all pictures can be compared with each other. To be able to start the double display, a picture must be currently displayed and you must have previously marked other pictures.

1. Start the double picture display with the appropriate item in the context menu. With "Arrow up/down", scroll through the reference list on the left. "Arrow left" moves the right-hand picture to the left as a fixed point. All of the functions of picture display are available.

UP

## Overview display



The overview display shows all of the pictures currently saved in the reference list.

1. Call up the overview display via the respective item in the context menu. All of the functions of picture display are available.





## 4.1 Functions of the DYABOLA Internet Interface

Help and explanations on the functions of the DYABOLA Internet interface will be accessible within the program as soon as the development of the system has been completed. If you have already worked with the CD-ROM version of a DYABOLA database, you will quickly discover that the internal structure of the data has not changed. Therefore, the first section of this manual in particular remains relevant for the Internet version.



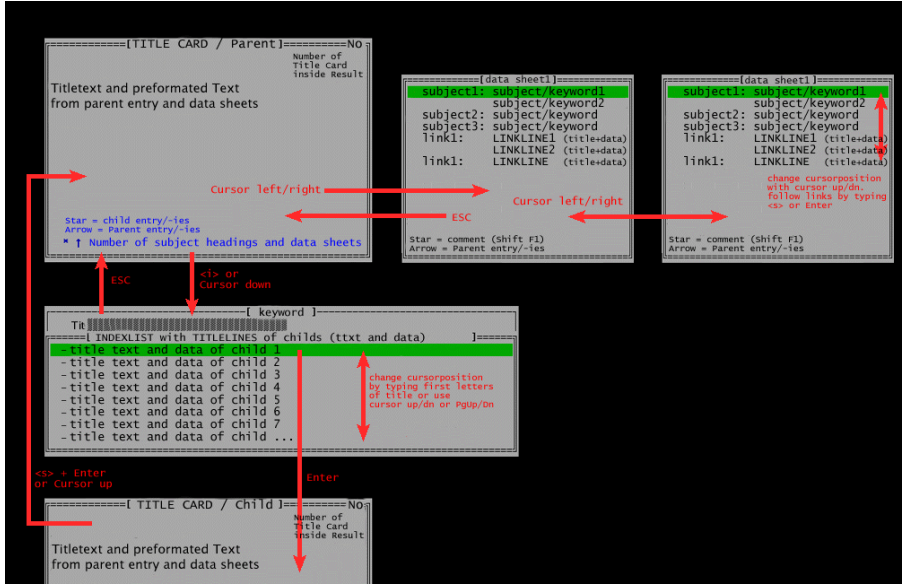
UP

USER MANUAL

copyright 2001 by Verlag Biering & Brinkmann  
Postfach 45 01 44, D-80901 München  
Fax +49-89-32 35 21 82, E-Mail: info@dyabola.de  
about

## 5.1 Navigation diagram

You will also find the navigation diagram shown here in the [DYABOLA short reference](#). Concerning specific search methods, please refer to the introductory manuals on the individual databases.
















# Appendix 1

## Key combinations










General  
 Search functions  
 Title card  
 Contents list  
 Data sheets  
 Picture display

### General

	By pressing Enter (the return key), you either select the currently highlighted menu item or start a further search.
 or 	Position yourself within a menu or list using the Arrow up/down keys.
	Calls up Help texts.
 + 	Shows additional information on those headings that are marked with a small rhombus.
 + 	Opens the menu with the pre-defined settings (user language, printer character set, sorting order, polyhierarchic search).
	Switches between Latin and Greek alphabets.
	When this key is depressed (green light on keyboard), only the monographs are selected in all search functions.
	With Escape, you can cancel a search and return to the starting menu from any point in the program.








UP






### Search functions

 + 	Classifier Tree: Start of a search Free search: Selection of a title card.
	Classifier Tree: Opens the alphabetical list of abbreviated heading names. When selecting the desired heading, the respective lower level is automatically shown.
 + 	Classifier Tree: If the alphabetical list of heading names (see F2) appears more than once, jump ahead by pressing Shift + F2.
 + 	Enables you to mark several entries in the red indices. (Function not supported in the "Key-word" search option). LEFT-HAND SHIFT ONLY!
 + 	In the indices of a secondary entry (marked with * = asterisk), refers to the main entry.

UP

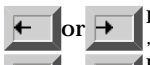

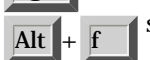

### Title card

	Shows the dependent entries of the title now being displayed. If a title has dependent entries, you will see an asterisk (*) in the status bar of the title card.
	Prints the current literature reference.
	Shows the title card of the superior title, provided that the title card displayed has an Arrow up (-) symbol in its status line.
	Deletes the literature reference shown from the search result.
	When a result is displayed, F2 enables you to make a quick jump to any chosen result number or card number.
	Shows the appended photograph (only if the title appears in the title card, but also as a link in the data sheet!). If a contents list is shown, please use Alt + f.
	Shows a list of the last 20 navigation steps. (Only the actual navigation steps are shown, in other words navigation via link lines in a data sheet or in contents lists. The creation of a new results file is not understood as a navigation step!)

-  If only the title card is displayed, no data sheet is shown, and you see a "," in the information bar of the title card, Shift + "i" produces a search result that shows all subtitles dependent on the title displayed.
-  If a title card is displayed, you can jump to a certain position number of the result now active.
-  Shows the date of input and editor of a title.
-  Shows the data sheets, or switches between the data sheets that are appended to a title and the dependent descriptor window = b
-  Switches between the title cards of a result, if more than one is available.








UP

## Contents list

-  Displays data sheets and dependent descriptors in the table of contents (equivalent to: , ) = Alt+b.
-  Positions the cursor in the contents list.
-  Jumps seven entries forwards or backwards in the contents list.
-  Shows the appended photo in the contents list.

UP

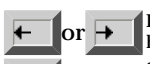


## Data sheets

-  On the one hand, opens up the dependent descriptors abbreviation in the dependent descriptor window. On the other, shows the endpoint of a reference (marked with an arrow) in the data sheet of references.
-  If a data sheet (references, dependent descriptors) is displayed, you can mark your current position with the key. If you now scroll down (PgDn), the respective data sheet of the next title is then shown.
-  Shows the appended photograph (only if the title appears in the title card, but also as a link in the data sheet!). (Alt + f in the table of contents.)
-  Press Shift + "i" to produce a search result on all entries that have this dependent descriptor, insofar as the cursor is positioned on a dependent descriptor in a data sheet.
-  Shows the superior title, as long as data sheets are displayed.
-  Shows the data sheets, or switches between the data sheets that are appended to a title and the dependent descriptor window.
-  Shows all photos consecutively that are appended to a text reference list.

UP

## Picture display

Activate the picture display with f or Alt+f, as described above. Please also note the functions of the right-hand mouse button ([section 3.7](#) of the User's Manual).

-  Function during double picture display: The right-hand picture is transferred to the left half of the screen.
-  Switches to double picture display
-  Saves a picture in the reference list

UP





## Appendix 2

### Special characters

Greek alphabet

Diacritic characters

Note for Administrator

DYABOLA supports an extended character set, which supports both the modern Greek alphabet and various diacritic characters. The character set can be adapted to the respective database. This is necessary, as the 256 ASCII characters are often insufficient. (see also [section 3.3 Edit result/Export/Printer](#))

### Greek alphabet

In the screen display and in print-outs, the database supports the reformed modern Greek alphabet with only one accent ("monotonikó"). To write in Greek, simply press the F10 key; the keyboard will automatically switch over to a Greek character keyboard. If you press F10 again, it switches back to the Latin alphabet.

(The Omega is found on "V", Ypsilon on "Z", Psi on "C", Zeta on "Y", Theta on "U", Xi on "J", the final Sigma on "w", and Digamma on "q". All other characters are to be found on their Latin equivalents. NB: On the English keyboard, the Zeta is on the "Z" and the Ypsilon on the "Y".)

Greek entries only in the Subject Catalogue and in the Grave Relief database.

UP

### Diacritic characters

DYABOLA supports all commonly used letters of the European Latin alphabet. To write a letter with an accent, you must select various key combinations. Please note that you must always select the accent first and then enter the relevant letter:

	F5	F6	F7	F8
ALT	cross strokes (ð)	Hungarian umlaut (ű)	° or point (à oder Ý)	ý (without point)
CTRL (STRG)	Cedila (ç)	diacresis (ä)	tilde (~)	yumurschak (ð)
SHIFT	acute (á)	grave (à)	circumflex (â)	hatschek (?)

If, for example, you wish to select the Hungarian u as an umlaut, first press the ALT and F6 keys simultaneously, let go of them again and then press the "u".

UP

### Note for Administrator

The character sets are located in the subdirectory \dyazchn alongside the database directories \dyabola and \dyaerg. The file name of the respective character set is composed of the respective database number (e.g. 18 for CENSUS) and character set name "dya16". If the special character set for the respective database is not available, the file dya16 serves as the default character set. The database number can be found in [Appendix 3](#).

UP



UP

USER MANUAL



## Appendix 3

### Project overview

The following list shows the internal database number, the project name and the database abbreviation.

#### Projekte

01	Realkatalog Rom	rom
02	Römisch-Germanische Kommission, Frankfurt	rgk
03	Zugangsverzeichnis Madrid	mad
04	Jahresbibliographie Rom	rxx
05	Eurasien-Bibliographie	eur
06 (05)	Winckelmann-Bibliographie	wbib
12	Bibliothek des Städel	stae
15	Antikenmuseum Berlin	ant
16	Vatikanische Museen	vat
17	Attische Grabreliefs	grab
18 (38)	Census	cen
21	Winckelmann-Denkmäler	wcen
25	Inventar der Glyptothek	glyp
27 (27)	Ur- und Frühgeschichte	
33 (34)	Dyabola-Kunden	
34	Dyabola Adressen	
38	Milet Datenbank	mlt
71	Tarent Datenbank	tar

UP

UP

USER MANUAL

copyright 2001 by Verlag Biering & Brinkmann  
 Postfach 45 01 44, D-80901 München  
 Fax +49-89-32 35 21 82, E-Mail: info@dyabola.de  
 about

**PROJEKT DYABOLA**  
Verlag Biering & Brinkmann  
Postfach 45 01 44  
D-80901 München  
Fax +49-89-32 35 21 82  
E-Mail: [info@dyabola.de](mailto:info@dyabola.de)  
Homepage: [www.dyabola.de](http://www.dyabola.de)

This DYABOLA manual is the printed version of the online-manual.  
On our Homepage ([www.dyabola.de](http://www.dyabola.de)) under the header MANUAL  
you'll always find the most recent update of the DYABOLA Short Reference,  
the DYABOLA User Manual and all project specific manuals.

Use the project specific manuals if you have no experience with DYABOLA  
The Short Reference is only for advanced users and refers to explanations  
given in the User Manual